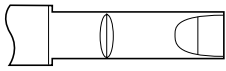


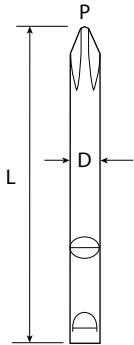
BITS FOR HAND TOOLS



FOR: AUTOMATIC SPIRAL RATCHET DRIVERS (PUMP ACTION DRIVERS)

C61 : VESSEL No.1500 × 240/300
 C62 : VESSEL No.1500 × 440
 C63 : VESSEL No.1500 × 620

 = CROSS POINT =



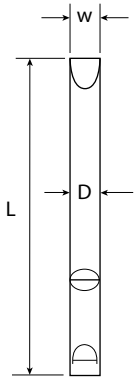
EDP #	MODEL #	P × D × L (HEAT TREATMENT)
489633	Y001/55	1 × 5.5 × 55
489634	Y002/55	2 × 5.5 × 55
441031	C61	1 × 5.5 × 60 H
441041	C61	2 × 5.5 × 60 H
489635	Y001/70	1 × 7 × 70
489636	Y002/70	2 × 7 × 70
442031	C62	1 × 7 × 90 H
442041	C62	2 × 7 × 90 H
442051	C62	3 × 7 × 90 G
443041	C63	2 × 8 × 90 H
443051	C63	3 × 8 × 90 G

 = POZIDRIV =



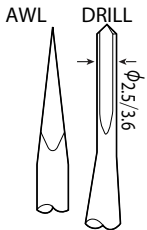
EDP #	MODEL #	P × D × L
489637	Y001/55PZ	1 × 5.5 × 55
489738	Y002/55PZ	2 × 5.5 × 55
489639	Y001/70PZ	1 × 7 × 70
489640	Y002/70PZ	2 × 7 × 70

 = PLAIN SLOT =



EDP #	MODEL #	w × D × L (HEAT TREATMENT)
489641	Y603/55	3 × 5.5 × 55
489642	Y645/55	4.5 × 5.5 × 55
489643	Y655/55	5.5 × 5.5 × 55
441071	C61	4 × 5.5 × 60 E
441072	C61	6 × 5.5 × 60 E
489644	Y655/70	5.5 × 7 × 70
489645	Y606/70	6 × 7 × 70
489646	Y665/70	6.5 × 7 × 70
442071	C62	6 × 7 × 90 E
442072	C62	8 × 7 × 90 E
443071	C63	7 × 8 × 90 E
443072	C63	9 × 8 × 90 E

= OTHERS =



EDP #	MODEL #	P × D × L (HEAT TREATMENT)
441073	C61	AWL × 5.5 × 60 G
441075	C61	φ2.5 × 5.5 × 60
441076	C61	φ3.6 × 5.5 × 60

BITS FOR PRECISION SCREWS

DOUBLE-END INSERT BITS & HOLDERS

SCREWS-SHANK DRIVERS & HOLDERS

DOUBLE-END POWER BITS

INSERT BITS

POWER BITS

BIT HOLDERS & FINDER SLEEVES

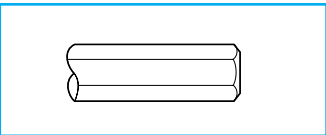
SOCKET BITS (NUT SETTERS)

EXTENSIONS & ADAPTERS

BITS FOR HAND TOOLS

IMPACT SOCKETS & OTHERS

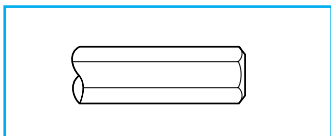
GOLD COLOUR BITS SERIES



FOR: BIT-HOLDING SCREWDRIVERS WITH HEX OPENING 1/4"

C93 : VESSEL NO.860, TD-50

		= CROSS POINT =	EDP #	MODEL #	P × L
			444031	C91	1 × 25
			444041	C91	2 × 25
		= PLAIN SLOT =	EDP #	MODEL #	w × L
			444071	C91	5 × 25
		444072	C91	7 × 25	
		= COMBINATION =	EDP #	MODEL #	P × w × L
		444841	C93	2 × 6 × 32	



FOR: HAND IMPACT DRIVERS

C50 : VESSEL NO.2300 & 2600A
C51 : VESSEL NO.2400 & 2500

		= CROSS POINT = (1/4" HEX SHANK)	EDP #	MODEL #	P × L (HEAT TREATMENT)
			431301	C50	1 × 125 G
			431302	C50	2 × 125 G
			431303	C50	3 × 125 G
		(8mm HEX SHANK)	EDP #	MODEL #	P × L (HEAT TREATMENT)
			431041	C51	2 × 36 G
			431051	C51	3 × 36 E
			431061	C51	4 × 36 E
			431042	C51	2 × 80 G
		431052	C51	3 × 80 E	
		= PLAIN SLOT = (1/4" HEX SHANK)	EDP #	MODEL #	w × L (HEAT TREATMENT)
			431311	C50	5 × 125 G
			431312	C50	6 × 125 G
		431313	C50	7 × 125 G	
		(8mm HEX SHANK)	EDP #	MODEL #	w × L (HEAT TREATMENT)
			431171	C51	8 × 36 E
		431271	C51	10 × 36 E	
		431273	C51	12 × 36 E	
		431172	C51	8 × 80 E	
	431272	C51	10 × 80 E		

BITS FOR PRECISION SCREWS
DOUBLE-END INSERT BITS & HOLDERS
SCREW SHANK ORIENTED HOLDERS
DOUBLE-END POWER BITS
INSERT BITS
POWER BITS
BIT HOLDERS & RINGERS SERIES
SOCKET BITS (NUT SETTERS)
EXTENSIONS & ADAPTERS
BITS FOR HAND TOOLS
IMPACT SOCKETS & OTHERS
GOLD COLOUR BITS SERIES