

Cyclone Finishing Tools



For the best in power, comfort, and versatility, Ingersoll-Rand created the Cyclone Finishing Tools Series to match a wide variety of finishing tasks. With a complete range of models, speeds, and configurations, plus a full selection of accessories, Cyclone tools combine versatility with innovation. Included in the line are three multi-purpose accessory tools — CycloCut, CycloFile, and CycloRout/ Trimmer — that offer specialty finishing capabilities for the most challenging situations.

Cited by the Industrial Design Excellence Award Program for their pioneering ergonomic design, Cyclone finishing tools will help your business reduce costs and improve working conditions. These innovative tools are lighter and easier to use than competitive finishing tools, yet have more power and less vibration — you'll feel the difference when you work.

Cyclone Finishing Tools



The ergonomic design of Cyclone finishing tools provides a unique combination of performance and proven user satisfaction.

Through pioneering efforts to provide workers with lighter, quieter, more comfortable tools, IR is extending a tradition of excellence in finishing tool design and performance.

Innovative Ergonomics

The unique D-shaped housing makes it easier to grip and operate the tool — it's a natural fit to the human hand. Advanced composites keep the housing from becoming cold to the touch, and reduce vibration so effectively, you can work steadily with less hand fatigue.

Comfort, Safety, and Control

The unique high-profile safety flange not only protects the operator's hand from the work, but also provides a pivot-point for improved control while preventing accidental throttle-starts. If preferred, the standard flange can be replaced with an optional low-profile flange. As the operator varies speed to match the task, the standard low-profile throttle responds smoothly; where required or specified, it can also be replaced with an optional locking lever.

Durability And Reliability

Cyclone housings feature one-piece construction: advanced composites molded over a steel liner. Angle heads and extensions are of steel construction.

Remarkably Simple To Service

You can take apart and reassemble a Cyclone finishing tool in just minutes. Once inside, you'll find fewer parts than any other tool in the industry. The patented



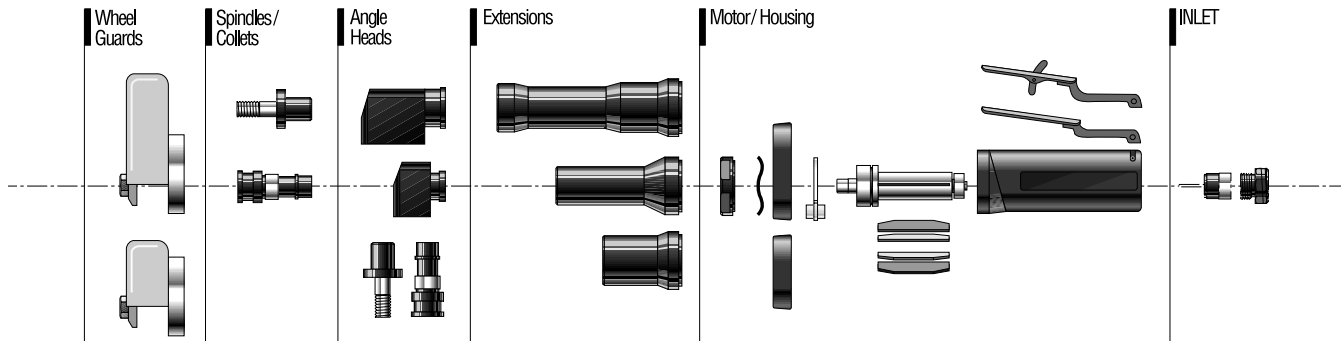
“drop-in” motor and vanes make routine maintenance easy. These features make repairs quick and fast, but Cyclone tools' outstanding durability means service is less likely — less down-time, lower cost.

Three Exhaust Options

The patented Flow Ring offers the flexibility of front or rear exhaust without additional equipment. Piped-away exhaust is also available.

Modular Design For Simplicity

The finishing tools within each Cyclone series share most parts in common, reducing your inventory requirements and simplifying maintenance.



Product Identification Guide

TYPICAL MODEL CD350RG4L

Series	Type	RPM	Exhaust	Spindle Type	Accessories
C = .35 Cyclone	D = Die Grinder	X100 = Rated RPM	R = Rear	G4 = 1/4" Collet	L = Locking Lever
T = .70 Cyclone	X = Extended		F = Front	S4 = 1/4" - .20 THD (Angle)	C = Concentric Flange
H = 1.0 Cyclone	A = Angle			H63 + P63 = 3" Guarded	
	XA = Extended Angle			H64 + P64 = 4" Guarded	
	XD = 2" Extended			P1045 = 4 1/2" Guarded	

- NOTES:
1. Exhaust direction can easily be switched from rear to front with no additional parts.
 2. Low profile concentric flange comes with locking lever and rear exhaust only.
 3. 1/4" Erickson Collet and Collet Wrenches are standard.

Cyclone Finishing Tools



C Series

The C Series is a compact, versatile .35 hp tool used for light material removal: cleaning rough castings, de-burring parts after machining, weld-cleaning, and other finishing tasks. Offering superior power in a small package, the C Series includes straight, angle, and extended straight versions.

T Series

For general finishing work and heavier material removal, T-Series grinders provide more power, .70 hp, with low vibration. Used for grinding, cutting, cleaning, and polishing, these tools are available in a variety of configurations for comfortable operation in tight spaces and contours. The T-Series includes straight, extended, angle, and extended-angle tools.

H Series

When you need the torque and horsepower for heavy material removal with burs, coated abrasives, and grinding wheels, the 1.0 hp H-Series grinders give you the ultimate in power and control. Choose from straight, extended, angle, and extended-angle configurations.

Cyclone Straight Extended Grinders

Carbide Bur and Mounted Wheel



CX250RG4



TX250RG4



HX180RG4

Standard Equipment

- 1/4" Erickson collet
DG110-700-G4 (C)
G160HD-700-1/4 (T and H)
- Collet wrenches
DG20-69A 7/16" x 11/16" (C)
DG10-69 1/2" x 9/16" (T and H)
DG120-69 5/8" x 3/4" (T and H)

Accessories

- DG110-700-G2 1/8" collet (C)
- DG120-700-G6 3/8" collet (T and H)
- LG1-A400 (C) locking lever
- LG2-A400 locking lever
- LG1R-23 (C) concentric flange
- LG3R-23 (T and H) concentric flange
- LG1-A1015 (C) variable-speed regulator
- LG2-K284 exhaust deflector (T and H)

G4 = 1/4" Erickson collet

Model	Rated Power hp	Free Speed rpm	Weight lb.	Length in.	Side to Center Distance in.	CFM
CX200RG4 ●	.35	20,000	1 ³ / ₁₆	9 ³ / ₁₆	3/4	11
CX250RG4 ● ■	.35	25,000	1 ³ / ₁₆	9 ³ / ₁₆	3/4	12
CX300RG4 ● ■	.35	30,000	1 ³ / ₁₆	9 ³ / ₁₆	3/4	14
TX120RG4	.70	12,000	2 ⁵ / ₈	12 ⁷ / ₁₆	3/4	24
TX180RG4 ● ■	.70	18,000	2 ⁵ / ₈	12 ⁷ / ₁₆	3/4	23
TX200RG4 ● ■	.70	20,000	2 ⁵ / ₈	12 ⁷ / ₁₆	3/4	31
TX250RG4 ■	.70	25,000	2 ⁵ / ₈	12 ⁷ / ₁₆	3/4	26
HX120RG4 ● ■	1.00	12,000	2 ⁷ / ₈	13 ⁵ / ₁₆	3 ¹ / ₃₂	43
HX150RG4 ■	1.00	15,000	2 ⁷ / ₈	13 ⁵ / ₁₆	3 ¹ / ₃₂	40
HX180RG4 ●	1.00	18,000	2 ⁷ / ₈	13 ⁵ / ₁₆	3 ¹ / ₃₂	43

Air Inlet: All Models 1/4" NPT.

Size Hose Recommended: Series C, 5/16". Series T and H, 3/8".

All standard models have dual exhaust capabilities except TX120 and HX120, which are rear exhaust only.

Exhaust direction can easily be switched from front to rear.

Performance figures are at 90 psi air pressure.

To order front exhaust, replace "R" with "F" in model number. To order locking lever, add "L" to end of model number. To order concentric/low profile flange, add "C" to end of model number. Examples: CD200FG4, CD200RG4L, CD200RG4C.

● Not Available with "C"

■ Not Available with "L"

Cyclone Straight Grinders

Carbide Bur and Mounted Wheel



CD350RG4



TD180RG4



HD180RG4



TD250RG4K

Standard Equipment

- 1/4" Erickson collet
G160HD-700-1/4 (T and H)
DG110-700-G4 (C)
- Collet wrenches
DG20-69A 7/16" x 11/16" (C)
DG10-69 1/2" x 9/16" (T and H)
DG120-69 5/8" x 3/4" (T and H)

Accessories

- DG110-700-G2 (C) 1/8" collet
- DG120-700-G6 (T and H) 3/8" collet
- LG1-KI bur kit includes:
DG10-RF case (4 1/4" x 9 3/4")
DG20-RF 20 (9" foam insert)
(7 3/4" molded part)
IRSD-1 Bur (1/4" ball)
IRSF-1 Bur (1/4" tree radius)
IRSA-1 Bur (1/4" cylindrical)
IRSL-1 Bur (1/4" cone)
- LG1-K284 (C) exhaust kit
- LG2-K284 (T and H) exhaust kit
- LG1R-23 (C) concentric flange
- LG3R-23 (T and H) concentric flange
- LG1-A400 (C) locking lever
- LG2-A400 (T and H) locking lever
- LG2K-302 carrying case

G4 = 1/4" Erickson collet

Model	Rated Power hp	Free Speed rpm	Weight lb.	Length in.	Side to Center Distance in.	CFM
CD200RG4	.35	20,000	1 ³ / ₁₆	6 ³ / ₁₆	3/4	11
CD250RG4	.35	25,000	1 ³ / ₁₆	6 ³ / ₁₆	3/4	12
CD250RG4K	.35	25,000	1 ³ / ₁₆	6 ³ / ₁₆	3/4	12
CD300RG4 ●	.35	30,000	1 ³ / ₁₆	6 ³ / ₁₆	3/4	14
CD350RG4	.35	32,000	1 ³ / ₁₆	6 ³ / ₁₆	3/4	15
TD120RG4 ● ■	.70	12,000	1 ⁵ / ₈	7 ³ / ₄	3/4	20
TD180RG4 ●	.70	18,000	1 ⁵ / ₈	7 ³ / ₄	3/4	23
TD200RG4 ●	.70	20,000	1 ⁵ / ₈	7 ³ / ₄	3/4	24
TD250RG4	.70	25,000	1 ⁵ / ₈	7 ³ / ₄	3/4	26
TD250RG4K	.70	25,000	1 ⁵ / ₈	7 ³ / ₄	3/4	26
HD120RG4 ●	1.00	12,000	1 ⁷ / ₈	8 ⁹ / ₁₆	31/32	43
HD150RG4 ● ■	1.00	15,000	1 ⁷ / ₈	8 ⁹ / ₁₆	31/32	40
HD180RG4 ● ■	1.00	18,000	1 ⁷ / ₈	8 ⁹ / ₁₆	31/32	43
HD180RG4K	1.00	18,000	1 ⁷ / ₈	8 ⁹ / ₁₆	31/32	43

Air Inlet: All Models 1/4" NPT.

Size Hose Recommended: Series C, 5/16". Series T and H 3/8".

All standard models have dual exhaust capabilities except TD120 and HD120, which are rear exhaust only.

Exhaust direction on other units can easily be switched from front to rear.

Performance figures are at 90 psi air pressure.

To order front exhaust, replace "R" with "F" in model number. To order locking lever, add "L" to end of model number. To order concentric/low profile flange, add "C" to end of model number. Examples: CD200FG4, CD200RG4L, CD200RG4C.

● Not Available with "C"

■ Not Available with "L"

Type 1 Wheel



CD200RH63



TXD180RH63



HX180RH63

H63 = 3/8"- 24 Spindle, 3" Guard

H64 = 3/8"- 24 Spindle, 4" Guard

Standard Equipment

- Wheel guard, flanges and nut

Accessories

- LG1-A400 (C) locking lever
- LG2-A400 (T and H) locking lever
- LG1R-23 (C) concentric flange
- LG2R-23 (T and H) concentric flange

Model	Rated Power hp	Maximum Wheel Size in.	Free Speed rpm	Weight lb.	Length in.	Side to Center Distance in.	CFM
CD200RH63 ●	.35	3 x 1/4	20,000	17 ¹ / ₁₆	6 ¹ / ₈	3/4	11
CD250RH63 ●	.35	3 x 1/4	25,000	17 ¹ / ₁₆	6 ¹ / ₈	3/4	12
TXD180RH63	.70	3 x 1/2	18,000	2 ⁵ / ₈	9 ⁵ / ₁₆	3/4	23
TX180RH63 ●	.70	3 x 1/2	18,000	3 ¹ / ₄	12 ⁵ / ₁₆	3/4	23
HX150RH64 ●	1.0	4 x 1/4	15,000	3 ¹¹ / ₁₆	13 ³ / ₁₆	3 ¹ / ₃₂	40
HXD180RH63 ●	1.0	3 x 1/2	18,000	3 ¹¹ / ₁₆	10 ³ / ₁₆	3 ¹ / ₃₂	43
HX180RH63 ●	1.0	3 x 1/2	18,000	3 ¹¹ / ₁₆	13 ³ / ₁₆	3 ¹ / ₃₂	43
HX180RH64 ●	1.0	4 x 1/4	18,000	3 ¹¹ / ₁₆	13 ³ / ₁₆	3 ¹ / ₃₂	43
HX120RH64 ●	1.0	4 x 1/4	12,000	3 ¹¹ / ₁₆	13 ³ / ₁₆	3 ¹ / ₃₂	43

To order front exhaust, replace "R" with "F" in model number. To order locking lever, add "L" to end of model number. To order concentric/low profile flange, add "C" to end of model number. Examples: CD200FG4, CD200RG4L, CD200RG4C.

● Not Available with "C"

Air Inlet = 1/4"

Pencil Grinders

Carbide Bur and Mounted Stone

Standard Equipment

- Collet with 1/8" insert
- Collet wrenches – 47579, 47580
- 6' long x 7/32" ID (1.8m x 6mm) air hose and 18" long exhaust overhose

Accessories

- 3mm Collet – 47568-2
- 3/32" Collet – 47568-3
- DG600G2K grinder kit
Kit contains Model DG600G2 die grinder plus a molded carrying case, collet wrenches, exhaust hose assembly, inlet hose assembly and six 1/8" shank carbide burs – ball, tapered, tree and assorted cylindrical.



DG600G2

Model	Free Speed rpm	Throttle Style	Standard Collet Size in.	Exhaust Location	Spindle Offset in. mm	Tool Length in. mm	Air Consumption @ Free Speed cfm L/s	Sound Level @ Free Speed dB(A)	Std. Collet Insert Part#
DG600G2	60,000	Twist	1/8	Rear	.34 9	5.3 136	7 3.3	77	47568-1
DG600G2K	60,000	Twist	1/8	Rear	.34 9	5.3 136	7 3.3	77	47568-1

Grinders have 1/8" NPT inlet; 7/32" hose is recommended.

Performance figures are at 90 psi air pressure.

Air Engraving Pen Kit

Features

- Knurled zoom throttle provides positive control
- Steel housing dampens vibration, improves operator control
- Variable speed permits tool to be used on a wide selection of materials
- Carbide tipped stylus holds percussive point
- Easy to repair, reducing down-time
- Three sets of tool flats eliminate need for special repair tools

EP50K Engraving Pen Kit

- Model EP50 Engraving Pen
- (Medium stylus standard.) Flexible hose (DG100-130: 6' x 3/16")
- Three assorted styluses (Fine, Medium, Coarse)
- Molded plastic carrying case (#DG10-RF)

Equipment at Extra Price

- Fine point stylus EP50-515 (Black)
- Medium point stylus EP50-516 (Steel color)
- Coarse point stylus EP50-517 (Green)
- Hose assembly (includes 1/8" NPT fittings) DG100-130
- Stylus Grinding Collet EP50-514



● EP50K

The Ingersoll-Rand EP50 Engraving Pen is designed to meet your industrial engraving needs. Variable zoom throttle permits a wide range of engraving possibilities from hard alloys to brittle ceramics. The Engraving Pen can be easily disassembled with standard mechanic's tools. Comfort, quietness and power have been ergonomically designed into this versatile tool. The Engraving Pen, including a standard stylus, can be purchased separately as Model EP50.

Model	Weight		Length		Side to Center Distance		Blows per Minute	Hose Conn. Pipe Tap in.	Size Hose Recomm.	
	oz.	kg	in.	mm	in.	mm			in.	mm
● EP50	5	.14	5 ⁵ / ₈	137	5 ⁵ / ₁₆	.8	18,750	1/8	5 ⁵ / ₁₆	5

Sound level of EP50 is 75.5 dBA.
Medium point stylus included with EP50 tool.

Cyclone Angle Grinders

Carbide Bur and Mounted Wheel



CA200RG4



TA120RG4

Standard Equipment

- 1/4" Erickson collet
- Collet body wrench
- Collet nut wrench

Accessories

- LG1-K284 (C) exhaust kit
- LG2-K284 (T and H) exhaust kit
- DG110-700-G2 1/8" collet (C)
- DG120-700-G6 3/8" collet (T and H)
- LG1-A400 (C) locking lever
- LG2-A400 (T and H) locking lever
- LG1R-23 (C) concentric flange
- LG3R-23 (T and H) concentric flange
- LG2-A48A dead handle (T and H)

G4 = 1/4" Erickson collet

Model	Rated Power hp	Free Speed rpm	Weight lb.	Length in.	Height Over Spindle in.	Side to Center Distance in.	CFM
CA120RG4	.35	12,000	1 ⁵ / ₁₆	6 ¹ / ₁₆	3	3/4	12
CA200RG4	.35	20,000	1 ⁵ / ₁₆	6 ¹ / ₁₆	3	3/4	14
TA120RG4	.70	12,000	2 ³ / ₈	7 ¹³ / ₁₆	3 ¹ / ₃₂	3/4	26
TA180RG4 ●	.70	18,000	2 ³ / ₈	7 ¹³ / ₁₆	3 ¹ / ₃₂	3/4	26
HA90RG4 ●	1.00	9,000	2 ⁵ / ₈	8 ¹³ / ₁₆	3 ¹ / ₃₂	3/4	43
HA120RG4 ●	1.00	12,000	2 ⁵ / ₈	8 ¹³ / ₁₆	3 ¹ / ₃₂	3/4	43
Extended Angle Grinders							
TXA135RG4	.70	13,500	2 ¹ / ₂	10 ³ / ₈	3	3/4	25
TXA140RG4	.70	14,000	2 ¹ / ₂	10 ³ / ₈	3	3/4	25

Air Inlet: All Models 1/4" NPT.

Size Hose Recommended: Series C, 5/16".
Series T and H, 3/8".

All standard models have dual exhaust capabilities.

Exhaust direction can easily be switched from front to rear.

Performance figures are at 90 psi air pressure.

To order front exhaust, replace "R" with "F" in model number.
To order locking lever, add "L" to end of model number. To
order concentric/low profile flange, add "C" to end of model
number. Examples: CD200FG4, CD200RG4L, CD200RG4C.

● Not Available with "C"

Cyclone Angle Grinders

Type 1 Angle Cutoff Tools



TXA160RH64

H63 = 3/8"- 24 Spindle, 3" Guard

H64 = 3/8"- 24 Spindle, 4" Guard

Model	Rated Power hp	Free Speed rpm	Weight lb.	Length Along Throttle in.	Height Over End of Spindle in.	Side to Center Distance in.	CFM
CA200RH63	.35	20,000	1 ⁹ / ₁₆	6 ¹ / ₈	2 ¹¹ / ₁₆	³ / ₄	14
TXA140RH64 ●	.70	14,000	3 ¹ / ₈	10 ³ / ₈	2 ¹¹ / ₁₆	³¹ / ₃₂	25
TXA160RH64	.70	16,000	3 ¹ / ₈	10 ³ / ₈	2 ¹¹ / ₁₆	³¹ / ₃₂	25
TA150RH64*	.70	15,000	2 ¹¹ / ₁₆	7 ¹¹ / ₁₆	2 ¹¹ / ₁₆	³¹ / ₃₂	26
TA180RH64*	.70	18,000	2 ¹¹ / ₁₆	7 ¹¹ / ₁₆	2 ¹¹ / ₁₆	³¹ / ₃₂	26
HXAX125RH64**●	1.00	12,500	3 ¹ / ₈	11	2 ¹¹ / ₁₆	³¹ / ₃₂	43

* Optional LG2-A48A Ergo Handle available.

** Model incorporates the small CA Series extended angle head on an H Series motor.

Air Inlet: All models 1/4" NPT.

Size Hose Recommended: Series C, 5/16". Series T and H, 3/8".

● Not Available with "C"

Type 27 & 28 Wheels



CA200RP63



HXA120RP64

P63 = 3/8"-24 Spindle, 3" Guard

P64 = 3/8"-24 Spindle, 4" Guard

P1045 = 5/8"-11 Spindle, 4 1/2" Guard (Plain Hole Wheels Only)

Standard Equipment

- Wheel guard, flanges and nut
- Spindle and wheel nut wrenches

Accessories

- LG1-K284 (C) exhaust kit
- LG2-K284 (T and H) exhaust kit
- LG1-A400 (C) locking lever
- LG2-A400 (T and H) locking lever
- LG1R-23 (C) concentric flange
- LG3R-23 (T and H) concentric flange

Model	Rated Power hp	Free Speed rpm	Weight lb.	Length Along Throttle in.	Height Over End of Spindle in.	Side to Center Distance in.	CFM
Angle Grinders							
CA200RP63 ●	.35	20,000	1 ⁹ / ₁₆	6 ¹ / ₁₆	1 ⁷ / ₈	3/ ₄	14
TA180RP63 ●	.70	18,000	2 ⁹ / ₁₆	7 ¹¹ / ₁₆	2 ¹⁷ / ₃₂	3 ¹ / ₃₂	26
TA120RP64	.70	12,000	2 ¹¹ / ₁₆	7 ¹¹ / ₁₆	2 ¹⁷ / ₃₂	3 ¹ / ₃₂	26
TXA135RP64	.70	13,500	2 ¹⁵ / ₁₆	10 ³ / ₈	2 ¹¹ / ₃₂	3 ¹ / ₃₂	25
TXA140RP64	.70	14,000	2 ⁵ / ₁₆	10 ³ / ₈	2 ¹¹ / ₃₂	3 ¹ / ₃₂	25
HA120RP1045*	1.00	12,000	3	8 ¹³ / ₁₆	2 ⁹ / ₁₆	3 ¹ / ₃₂	43
HA120RP64	1.00	12,000	2 ⁵ / ₈	8 ¹³ / ₁₆	2 ⁹ / ₁₆	3 ¹ / ₃₂	43
HA90RP64 ●	1.00	9,000	2 ⁵ / ₈	8 ¹³ / ₁₆	2 ⁹ / ₁₆	3 ¹ / ₃₂	43
Extended Angle Grinders							
HXA120RP64 ●	1.00	12,000	3 ¹³ / ₁₆	11 ¹³ / ₁₆	2 ¹ / ₂	3 ¹ / ₃₂	43
HXA120RP1045**	1.00	12,000	3 ⁷ / ₈	11 ¹³ / ₁₆	2 ¹ / ₂	3 ¹ / ₃₂	43

* Optional LG2-A48A Dead Handle.

** Standard LG2-A48A Dead Handle.

Air Inlet: All Models 1/4" NPT.

Size Hose Recomm.: Series C, 5/16". Series T and H, 3/8".

All standard models have dual exhaust capabilities.

Exhaust direction can easily be switched from front to rear.

Performance figures are at 90 psi air pressure.

To order front exhaust, replace "R" with "F" in model number.

To order locking lever, add "L" to end of model number. To

order concentric/low profile flange, add "C" to end of model number. Examples: CD200FG4, CD200RG4L, CD200RG4C.

● Not Available with "C"

Accessories

Description	Series CA, CD and CX Part Number	Series TA, TD, HA, HD, HX and HXA Part Number	Series TXA Part Number
1/8" Erickson Collet	DG110-700-G2	—	DG110-700-G2
1/4" Erickson Collet	DG110-700-G4	G160HD-700-1/4	DG110-700-G4
3/8" Erickson Collet	—	DG120-700-G6	—
Spindle Wrench	DG20-69A	DG10-69	DG10-69
Collet Nut Wrench	DG20-69A	DG120-69	DG120-69
Wheel Nut Wrench	D32-26	D32-26	D32-26
Inlet Hose Assembly	RO-130	R1A-130	R1A-130
Exhaust Hose Assembly	LG1-K284	LG2-K284	LG2-K284
Side Handle Kit	—	LG2-A48A*	—
3" & 4" Type 1 Inner Wheel Flange ■	DG120-86 3/8" Hole	DG120-86	DG120-86
3" & 4" Type 1 Outer Wheel Flange ■	DG120-16 3/8"-24 Thrd Hole	DG120-16	DG120-16

* Available for angle tools only. ■ To use Cutoff Wheels on Type 27 Arbor

Cyclone Routers/Trimmers

18,000-32,000 rpm

CycloRout/Trimmer

Created as part of the complete Cyclone line of finishing tools, the CycloRout/ Trimmer is a multi-purpose accessory tool. The attachment's adjustable nosepiece assures positive depth-of-cut for precision channel and bevel cuts. Ideal for cleaning up edges, cutting out panels, and trimming metal, composites, plastics, and wood. Take off the router/trimmer attachment and you're ready for general deburring and material-removal tasks.

CycloRout/Trimmer is an essential finishing tool for aerospace and automotive industries, as well as metal work, woodworking, and general maintenance.



HD180RT4

Features

- Pioneering design combines outstanding durability and comfort via advanced composites over solid steel structure
- Rear exhaust directs air, dust and cuttings away from the operator and the workpiece
- Rugged all-steel Erickson collet assures smooth accurate cuts and minimum runout
- Sturdy steel nosepiece with double-shielded bearing provides minimum vibration and better work quality
- Adjustable nosepiece for positive depth-of-cut and quick accessory changes

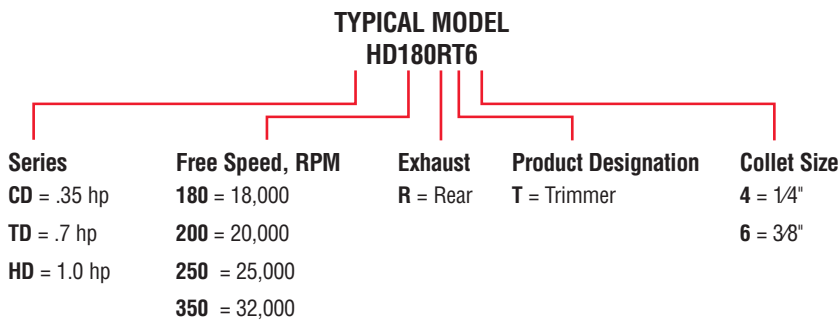
Standard Equipment

- Erickson collet
- Collet body wrench
- Collet nut wrench
- Coupling nut wrench

Accessories

- CD-RK4 1/4" (1/2"-20) Router Attachment
- TD-RK4 1/4" (1/2"-20) Router Attachment
- TD-RK6 3/8" (5/8"-11) Router Attachment
- LG3R-23 concentric flange
- LG2-A400 locking throttle lever

Product Identification Guide



Model	Bit Shank in.	Free Speed rpm	Weight lb.	Length without Bit Guide in.	Side to Center Distance in.
CD250RT4	1/4	25,000	1 ⁵ / ₈	6 ⁷ / ₈	3/4
CD350RT4	1/4	32,000	1 ⁵ / ₈	6 ⁷ / ₈	3/4
TD200RT4	1/4	20,000	2 ³ / ₈	8 ³ / ₈	3/4
TD200RT6	3/8	20,000	2 ³ / ₈	8 ³ / ₈	3/4
TD250RT4	1/4	25,000	2 ³ / ₈	8 ³ / ₈	3/4
TD250RT6	3/8	25,000	2 ³ / ₈	8 ³ / ₈	3/4
HD180RT4	1/4	18,000	2 ¹ / ₂	9 ³ / ₁₆	3 ¹ / ₃₂
HD180RT6	3/8	18,000	2 ¹ / ₂	9 ³ / ₁₆	3 ¹ / ₃₂

All standard models have dual exhaust capabilities. Exhaust direction can be easily switched from front to rear.

Performance figures are at 90 psi air pressure.

Trimmer Guides (see drawing at right).

Part Number	For Bits with Shank Size in.	Thread	A in.	B in.	C in.	D in.
R120-128-2	1/4	1/2 - 20	1 ¹ / ₂	3/8	3/8	1/8
R120-128-7	1/4	1/2 - 20	2 ¹ / ₂	1/2	1/2	3/16
LG2-129-1	3/8	5/8 - 18	2 ¹ / ₂	1/2	3/8	1/8

Guides for 1/4" models have 1/2" - 20 UNF thread.

Guides for 3/8" models have 5/8" - 18 UNF thread.

