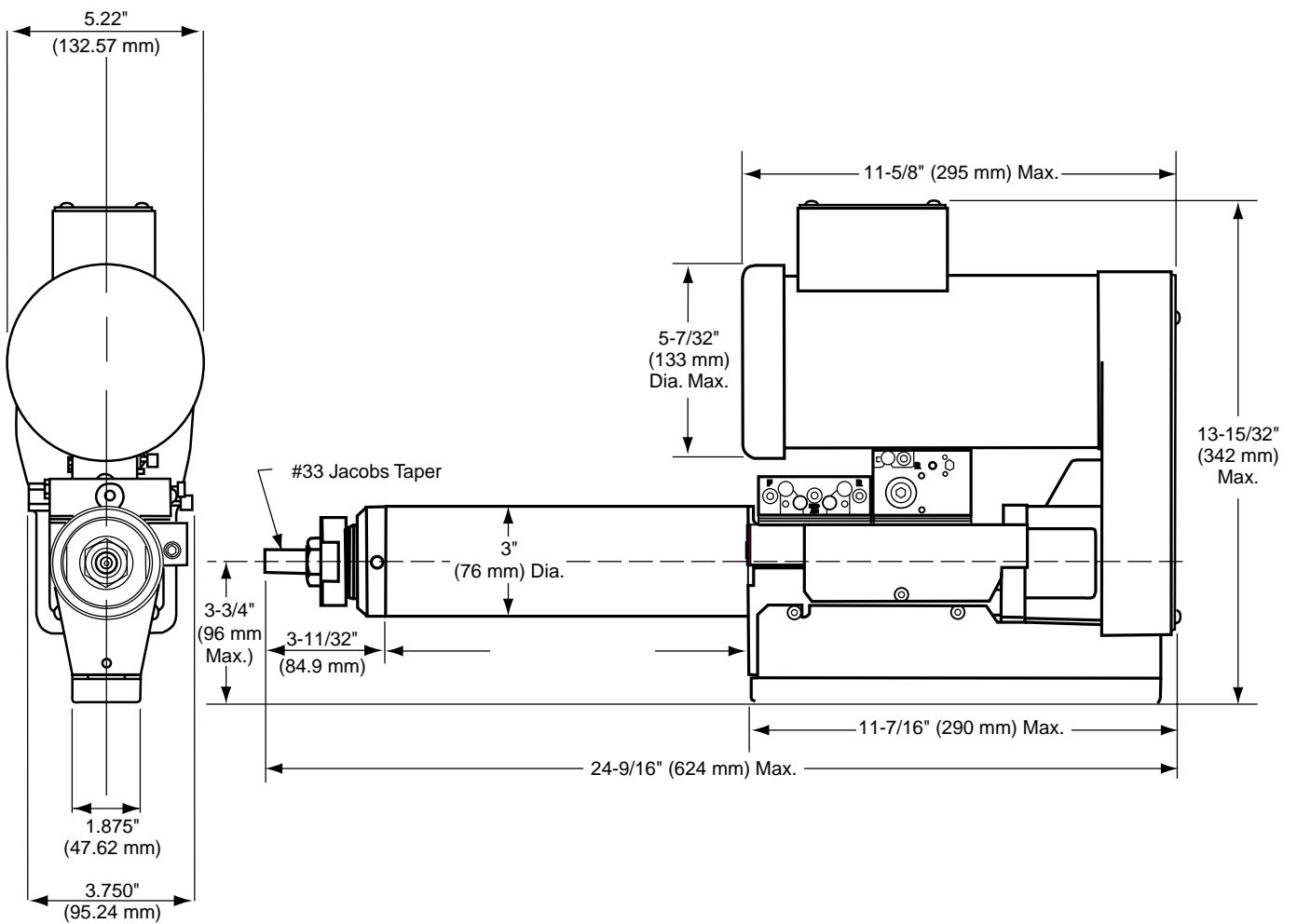


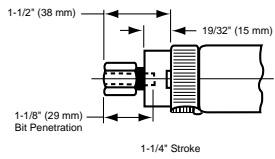
SERIES 34A, 54C & 74B ELECTRA-FEED DRILLS

TOOL WEIGHT 30 LBS.

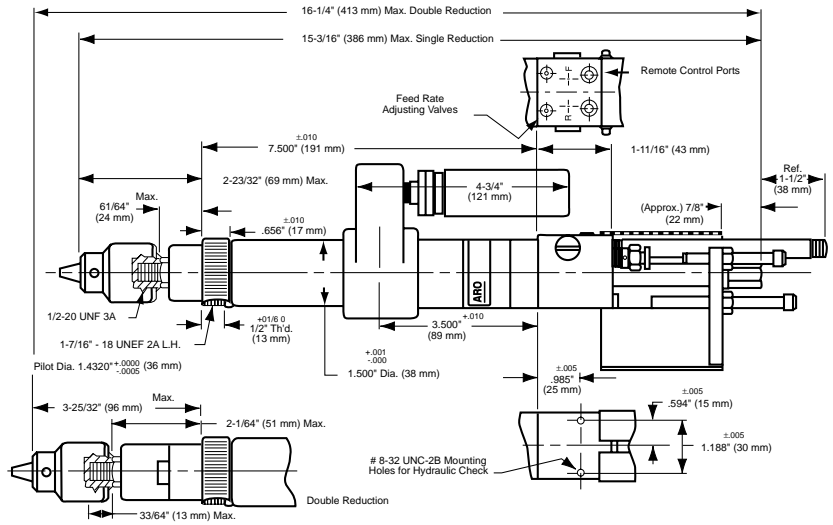


BANT-A-MATIC DRILLS 8245-B()-1 AND 8345-B()-1

TOOL WEIGHT 4.2 LBS.

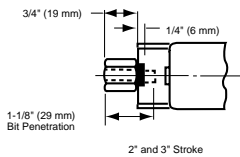


Shows built-in collet used on 19,000 RPM Tools.

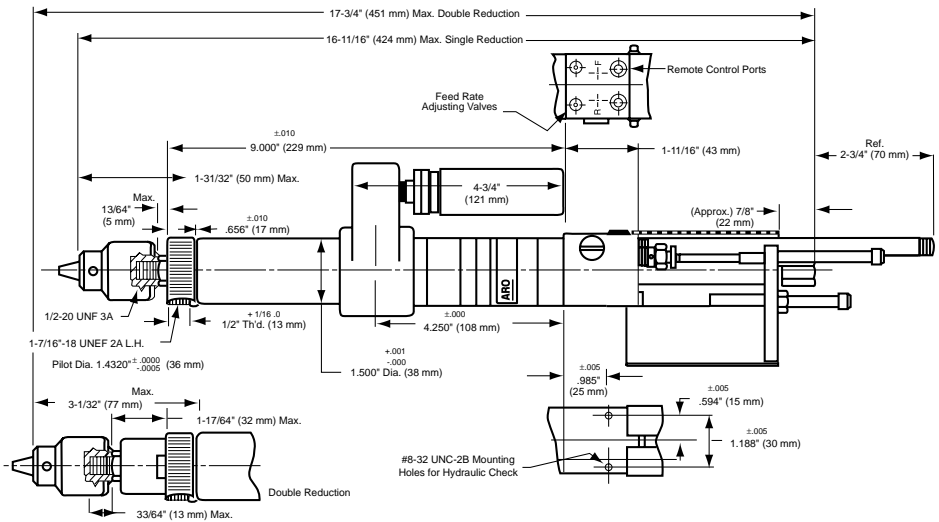


BANT-A-MATIC DRILLS 8245-B()-2 AND 8345-B()-2

TOOL WEIGHT 4.8 LBS.

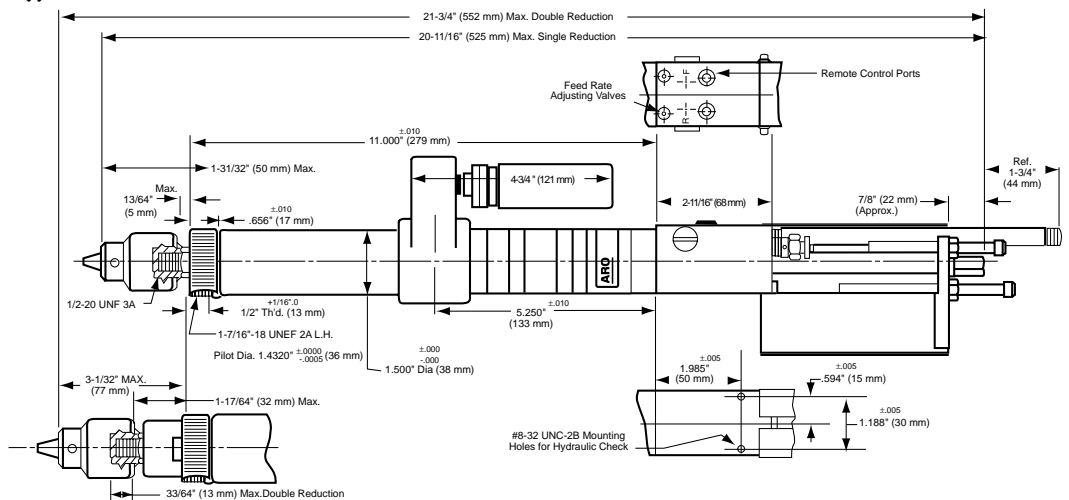
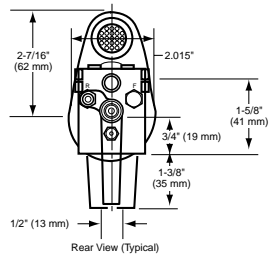


Shows built-in collet used on 19,000 RPM models.



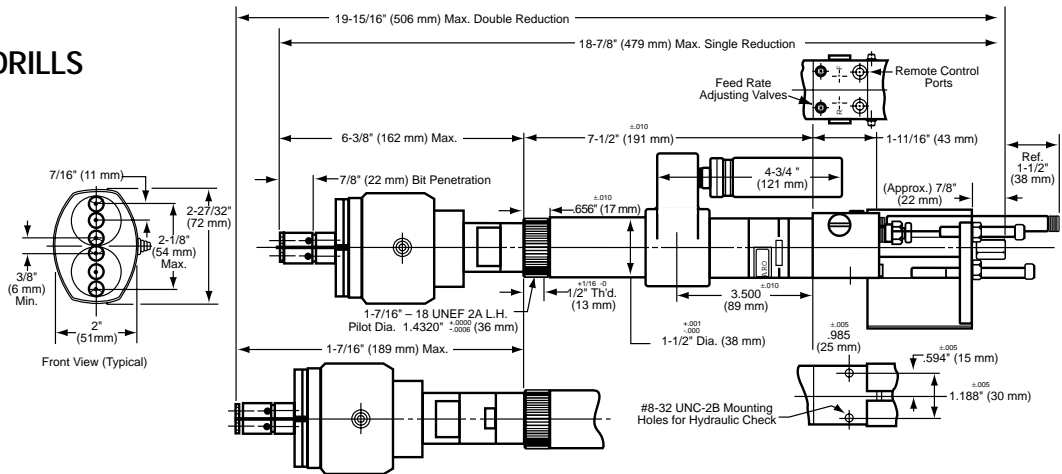
BANT-A-MATIC DRILLS 8245-B()-3 AND 8345-B()-3

TOOL WEIGHT 5.8 LBS.



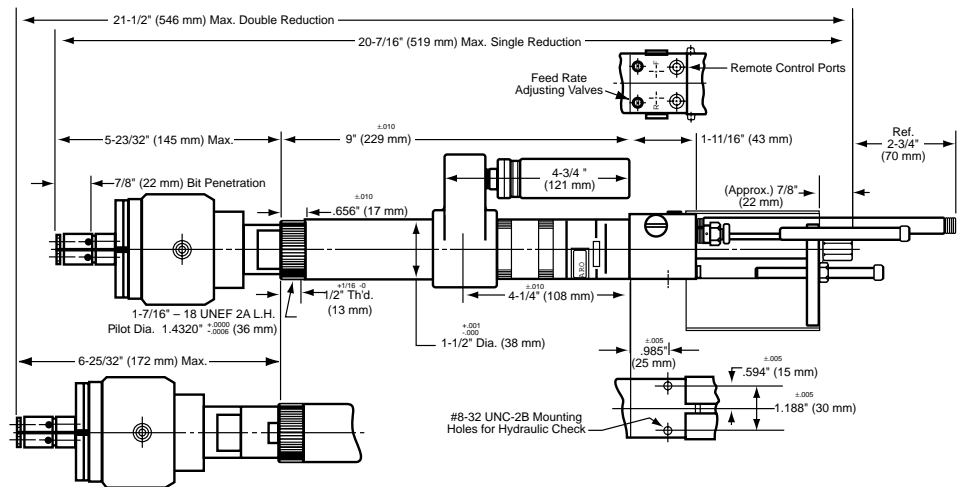
**BANT-A-MATIC TWIN DRILLS
8248-B(-)1**

TOOL WEIGHT 5.7 LBS.



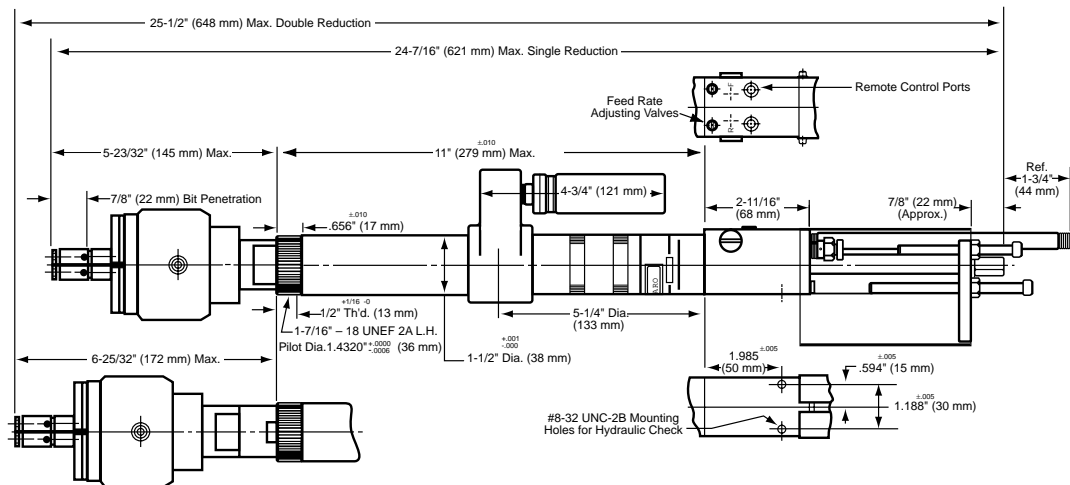
**BANT-A-MATIC TWIN DRILLS
8248-B(-)2**

TOOL WEIGHT 6.3 LBS.



**BANT-A-MATIC TWIN DRILLS
8248-B(-)3**

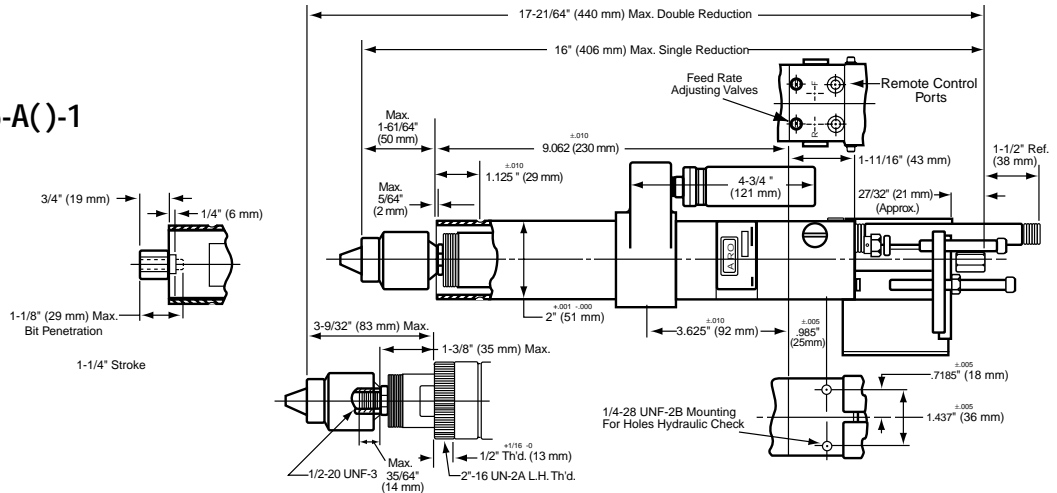
TOOL WEIGHT 7.3 LBS.



PAR-A-MATIC DRILLS 8255-A()-1 AND 8355-A()-1

TOOL WEIGHT 7.5 LBS.

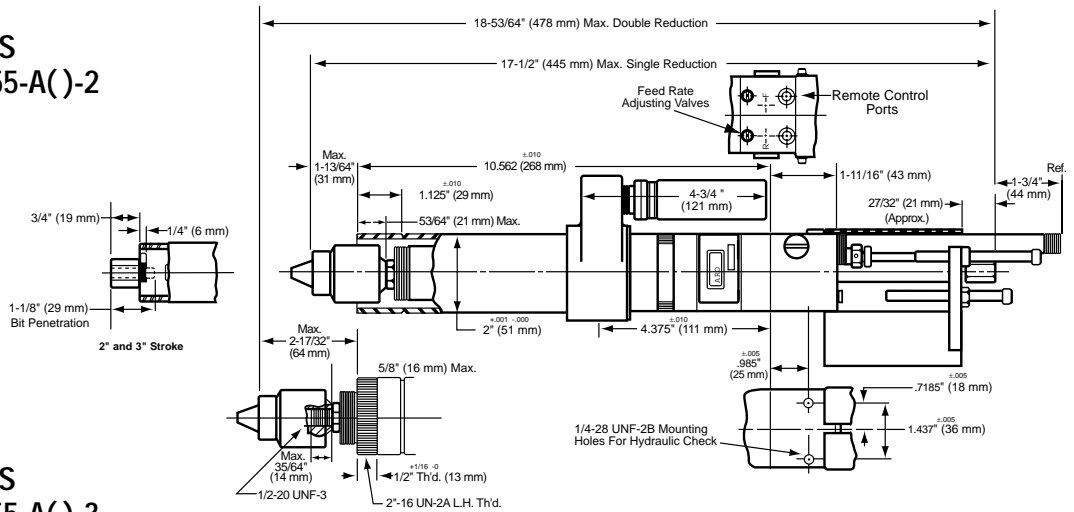
Shows built-in-collet used on
17,000 RPM Tools.



PAR-A-MATIC DRILLS 8255-A()-2 AND 8355-A()-2

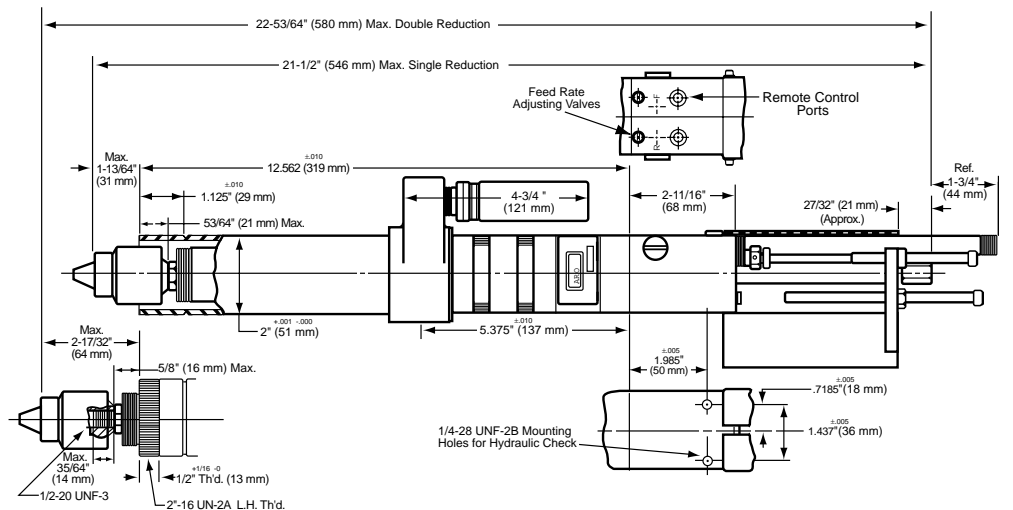
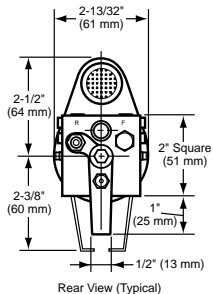
TOOL WEIGHT 8.0 LBS.

Shows built-in-collet used on
19,000 RPM Tools.



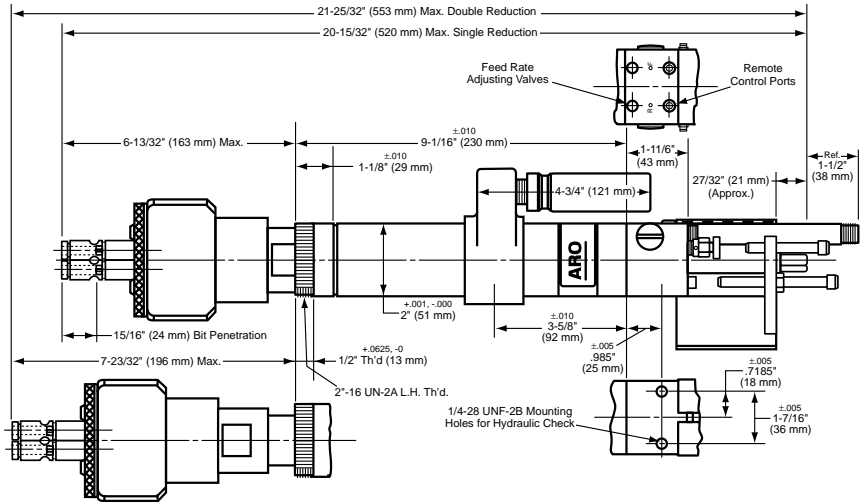
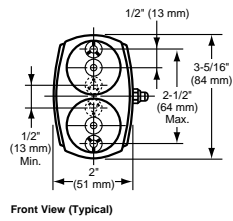
PAR-A-MATIC DRILLS 8255-A()-3 AND 8355-A()-3

TOOL WEIGHT 9.5 LBS.



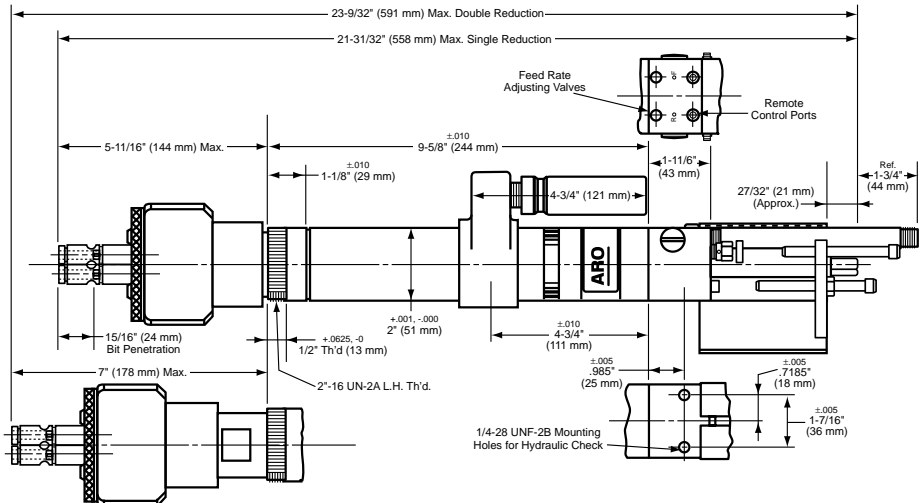
**PAR-A-MATIC TWIN DRILLS
8258-C()-1**

TOOL WEIGHT 9.6 LBS.



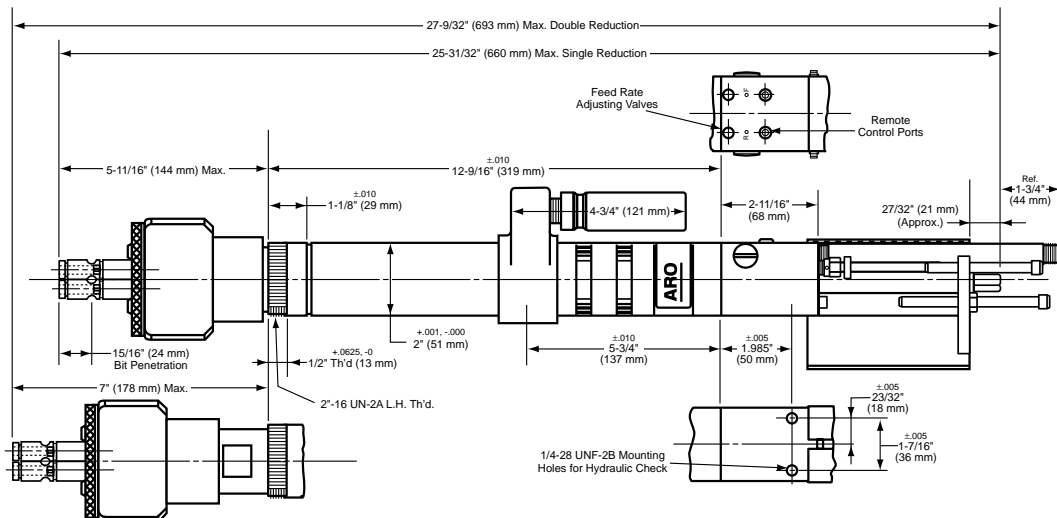
**PAR-A-MATIC TWIN DRILLS
8258-C()-2**

TOOL WEIGHT 10.1 LBS.



**PAR-A-MATIC TWIN DRILLS
8258-C()-3**

TOOL WEIGHT 11.6 LBS.

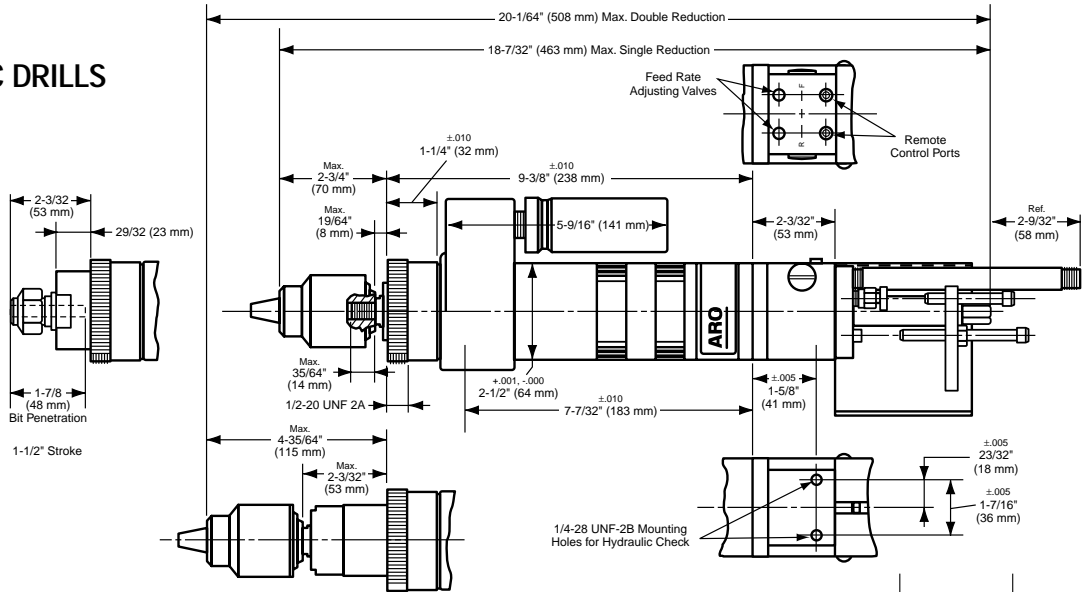


Dimensional Data

SUPER PAR-A-MATIC DRILLS 8265(-)-1

TOOL WEIGHT 13 LBS.

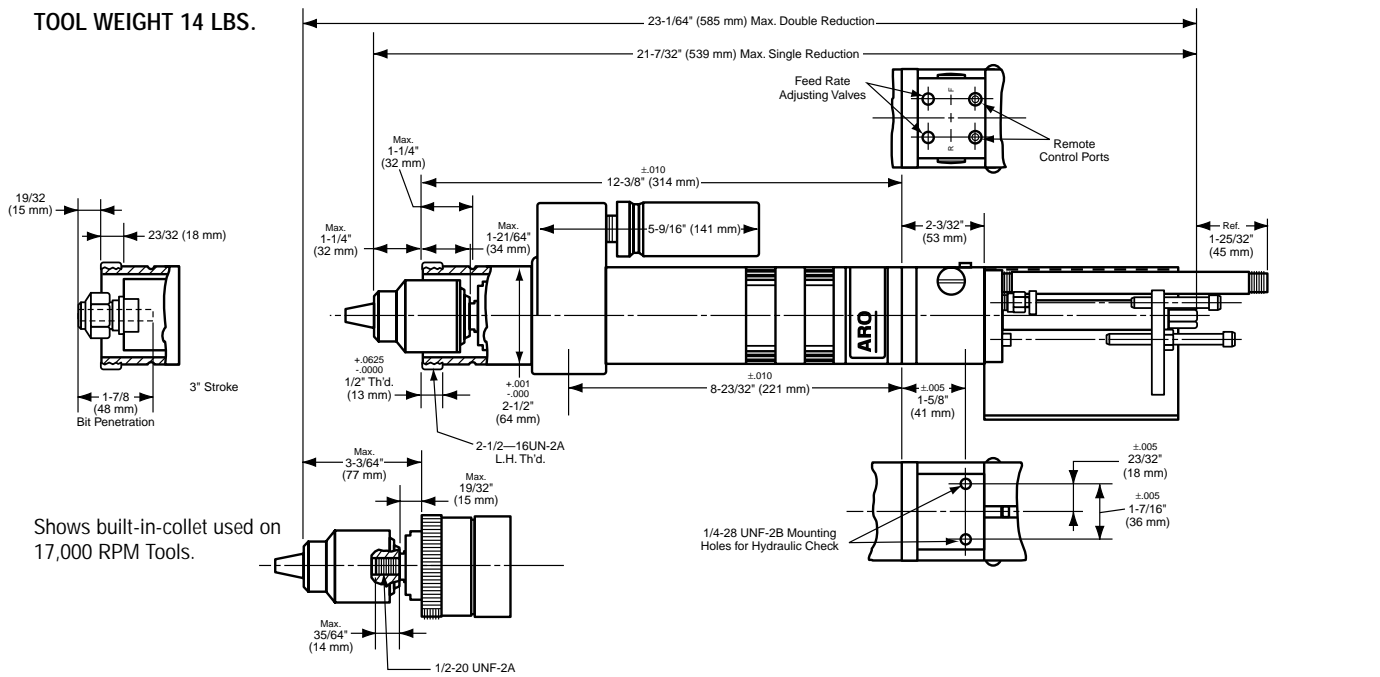
Shows built-in-collet used on 17,000 RPM Tools.



SUPER PAR-A-MATIC DRILLS 8265(-)-3

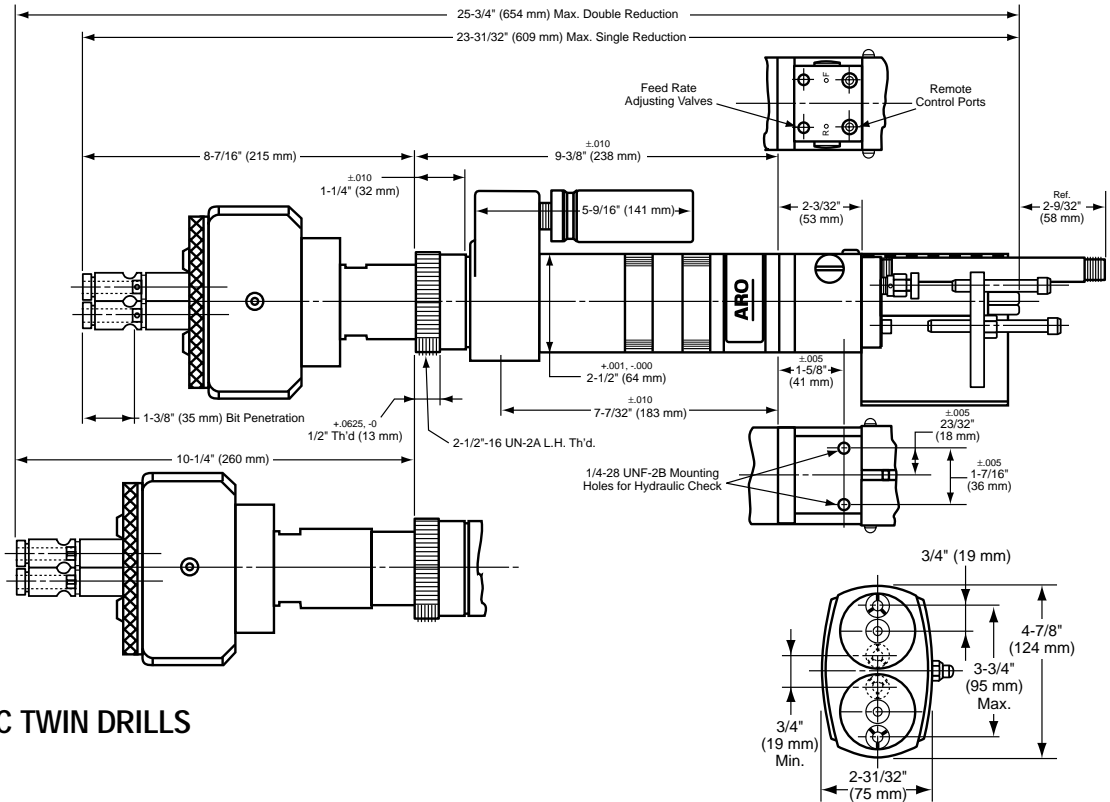
TOOL WEIGHT 14 LBS.

Shows built-in-collet used on 17,000 RPM Tools.



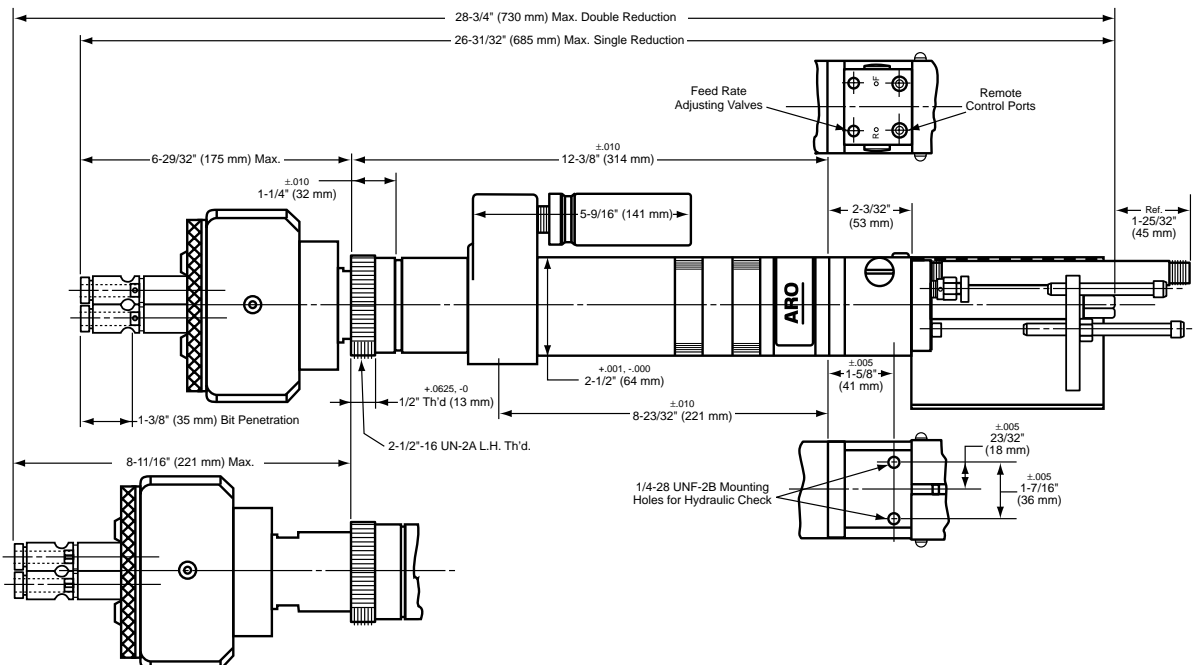
**SUPER PAR-A-MATIC TWIN DRILLS
8268-A()-1**

TOOL WEIGHT 18.5 LBS.



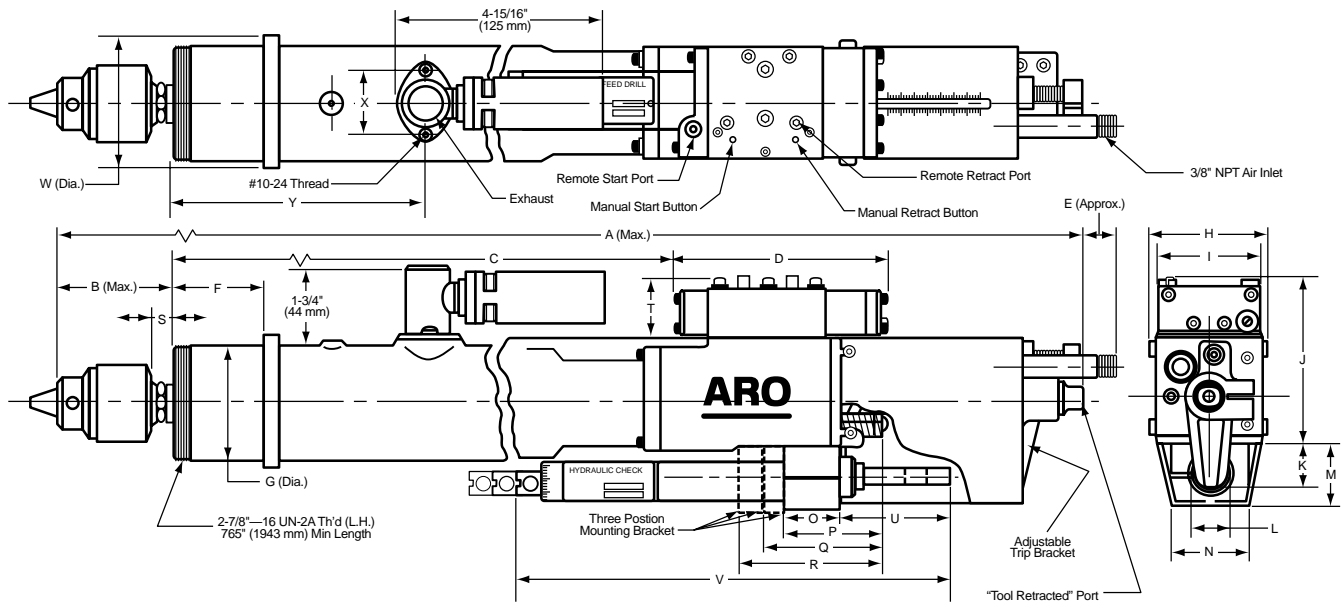
**SUPER PAR-A-MATIC TWIN DRILLS
8268-A()-3**

TOOL WEIGHT 19.5 LBS.



HI-THRUST DRILLS 8670-(-)3

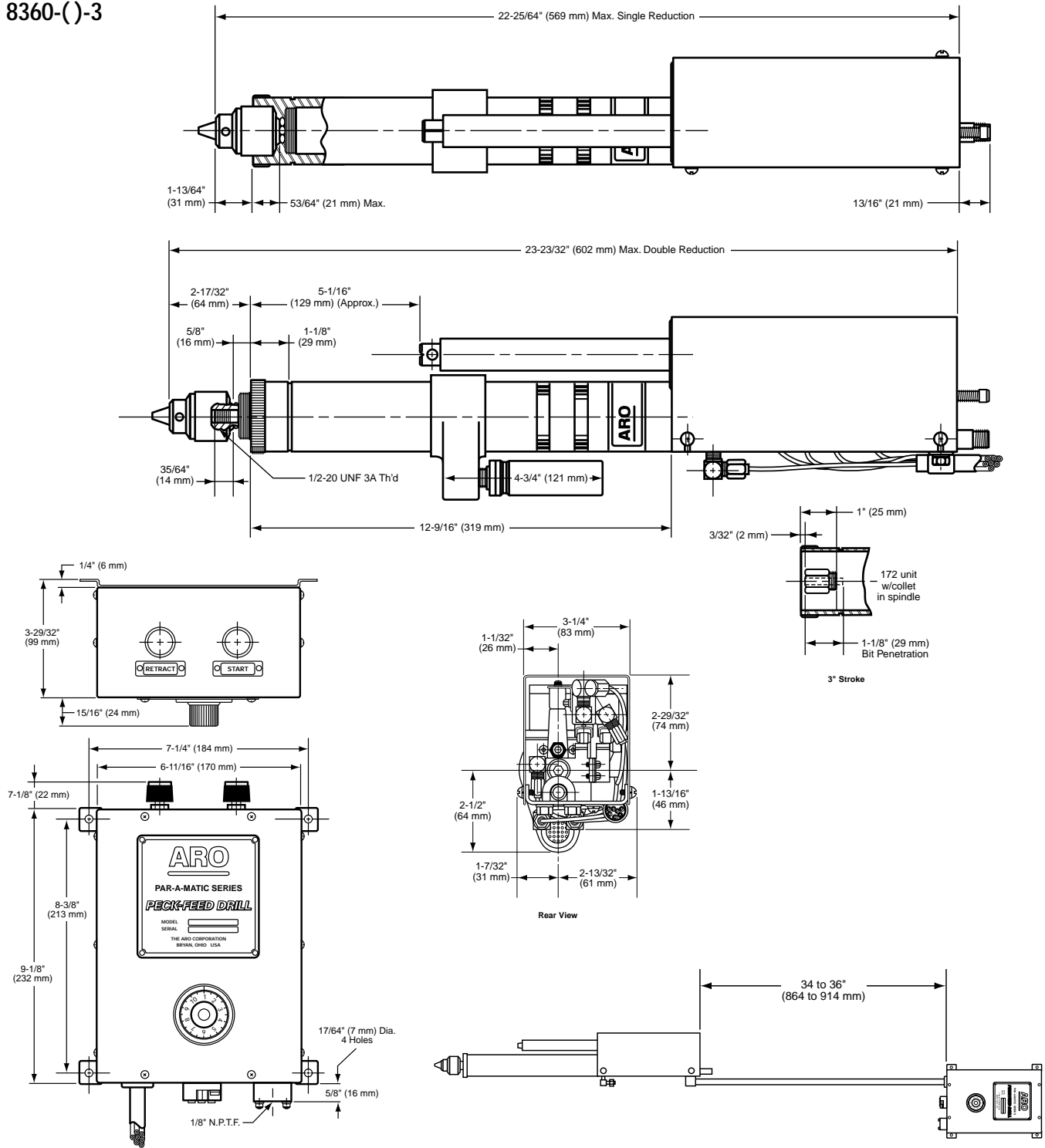
TOOL WEIGHT 28.0 LBS.



8670 Specifications

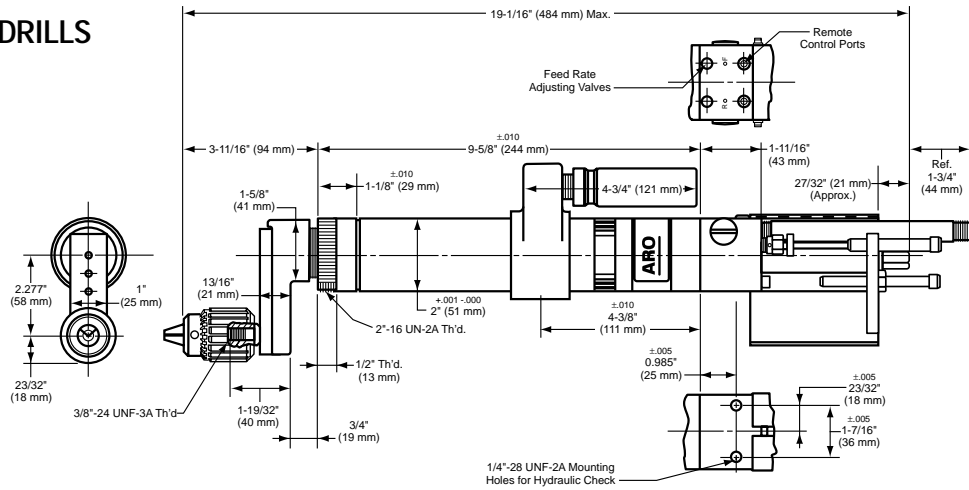
A		B	C	D	E			F	G	H	I	J	K	L		
3" Stroke					3" Stroke											
in.	27-3/4	3-21/32	14	5-5/16	1-1/16	2.24-2.26	2.872-2.874	2.784	2.5	4.312	61/64	.75				
mm	705	93	355	135	27	56.9-57.4	72.95-73.0	70	64	110	24	19				
M	N	O	P	Q	R	S	T	U			V			W	X	Y
								Hydraulic Check								
								1" Stroke	2" Stroke	3" Stroke	1" Stroke	2" Stroke	3" Stroke			
1.5	2.0	1.25	2.375	2.937	3.5	15/32	1.5	1.937	2.937	3.937	7.875	10.875	13.875	3.25	1.562	6.344
38	51	32	60	75	89	12	38	49	75	100	200	276	352	83	40	161

PAR-A-MATIC PECK DRILLS
8360(-)3



PAR-A-MATIC OFFSET DRILLS 8266-A(-)-2

TOOL WEIGHT 8.6 LBS.



LEAD SCREW TAPPERS 8655-B THRU 8659-B

TOOL WEIGHT 17 LBS.

