

## Regulators

Compressed air regulators are available in modular or inline models, in port sizes from 1/8" to 2".

### Contents

R07 Miniature General Purpose Regulator 1/8" and 1/4" ports . . .	ALE-5-2
R46 Miniature, Non-repairable General Purpose Regulator 1/4" to 3/8" ports . . . . .	ALE-5-4
R72G/R Excelon General Purpose Regulator 1/4" to 3/8" ports . . .	ALE-5-6
R73G/R Excelon General Purpose Regulator 1/4" to 1/2" ports . . .	ALE-5-8
R74G/R Excelon General Purpose Regulator 3/8" to 3/4" ports . .	ALE-5-10
R64G/R Olympian Plus General Purpose Regulator 1/4" to 3/4" ports . . . . .	ALE-5-12
R68G Olympian Plus General Purpose Regulator 3/4" to 1-1/2" ports . . . . .	ALE-5-14
R17G General Purpose Regulator 3/4" to 1-1/2" ports . . . . .	ALE-5-16
R18G General Purpose Regulator 1-1/2" and 2" ports . . . . .	ALE-5-18



R07



R46



R72G/R



R73G/R



R74G/R



R64G/R



R68



R17



R18

**Miniature Series 07 General Purpose Regulator 1/8" and 1/4" Port Sizes**

- **Compact design**
- **Full flow gauge ports**
- **Low torque, non-rising adjusting knob**
- **Snap action knob locks pressure setting when pushed in**
- **Standard relieving models allow reduction of outlet pressure even when the system is dead-ended**
- **Can be disassembled without the use of tools or removal from the air line**



**Ordering Information.** Models listed include PTF threads, relieving diaphragm, 5 to 100 psig (0.3 to 7 bar) outlet pressure adjustment range\*, with gauge.

Port Size	Model Number	Flow† scfm (dm <sup>3</sup> /s)	Weight lbs (kg)
1/8"	R07-100-RGKA	14 (6.5)	0.31 (0.19)
1/4"	R07-200-RGKA	15 (7)	0.31 (0.19)

† Approximate flow at 100 psig (7 bar) inlet pressure, 90 psig (6.3 bar) set pressure and a droop of 14.5 psig (1 bar) from set.

**Alternative Models**

R 0 7 - ★ ★ ★ - ★ ★ ★ ★

Port Size	Substitute
1/8"	1
1/4"	2

Option	Substitute
Not applicable	0

Option	Substitute
Standard	0
Low flow seat	2

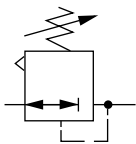
Threads	Substitute
PTF	A
ISO Rc taper	B
ISO G parallel	G

Outlet Pressure Adjustment Ranges*	Substitute
1 to 10 psig (0.1 to 0.7 bar)	A
5 to 50 psig (0.3 to 3.5 bar)	E
5 to 100 psig (0.3 to 7 bar)	K

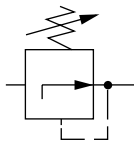
Gauges	Substitute
With	G
Without	N

Diaphragm	Substitute
Relieving	R
Non relieving	N

\* Outlet pressure can be adjusted to pressures in excess of, and less than, those specified. Do not use these units to control pressures outside of the specified ranges.

**ISO Symbols**


Relieving



Non relieving

**See Section ALE-25 for Accessories**



## Technical Data

Fluid: Compressed air

Maximum pressure: 300 psig (20 bar)

Operating temperature: -34° to 150°F (-35° to 65°C) \*

\* Air supply must be dry enough to avoid ice formation at temperatures below 2°C (35°F).

Typical flow at 150 psig (10 bar) inlet pressure, 90 psig (6.3 bar) set pressure and a droop of 15 psig (1 bar) from set:

1/8" ports: 14 scfm (6.5 dm<sup>3</sup>/s)

1/4" ports: 15 scfm (7 dm<sup>3</sup>/s)

Gauge ports:

1/8" PTF with PTF main ports

1/8" ISO Rc with ISO Rc main ports

1/8" ISO Rc with ISO G main ports

Materials:

Body: Zinc

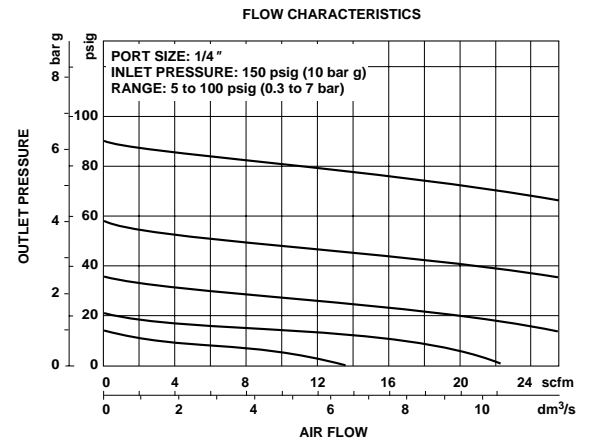
Bonnet: Acetal

Valve: Brass/nitrile

Valve seat: Acetal

Elastomers: Nitrile

## Typical Performance Characteristics

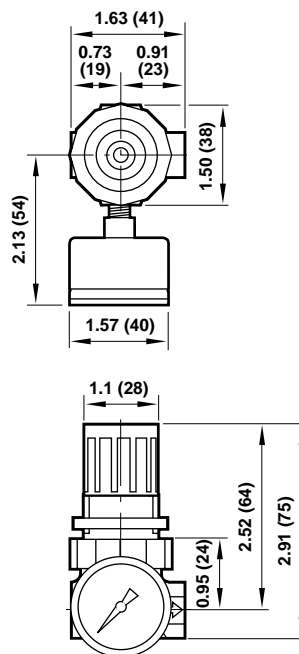


## Service Kits

Item	Type	Part number
Service kit	Relieving	3407-02
	Non relieving	3407-01

Service kit includes slip ring, diaphragm, standard valve seat with o-ring, valve, valve spring.

All Dimensions in Inches (mm)



Panel mounting hole diameter 1.19" (30 mm)  
Maximum panel thickness 0.25" (6 mm)

**Miniature Non-repairable Pressure Regulator 1/4" Port Size**

- **Reliable pressure regulation at air flows up to 13 scfm (6 dm<sup>3</sup>/s)**
- **Compact design and light weight construction**
- **Wrench flats for easy installation**
- **Relieving piston design allows reduction of downstream pressure when the system is dead-ended**
- **Choice of left to right or right to left flow**



**Ordering Information.** Model listed has left to right flow, 5 to 125 psig (0.3 to 8.5 bar) outlet pressure adjustment range\*, and PTF threads. Gauge is not included.

Port Size	Model	Flow <sup>†</sup> scfm (dm <sup>3</sup> /s)	Weight lb (kg)
1/4"	R46-200-RNLA	13 (6)	0.2 (0.09)

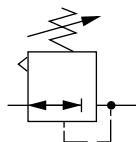
† Typical flow with 150 psig (10 bar) inlet pressure, 90 psig (6.3 bar) set pressure and 15 psig (1 bar) droop from set.

**Alternative Models**

R 4 6 - ★ ★ ★ - ★ ★ ★ ★

Port Size	Substitute	Threads	Substitute
1/4"	2	PTF	A
		ISO Rc taper	B
		ISO G parallel	G
Flow Direction With Knob Up and Gauge Visible	Substitute	Outlet Pressure Adjustment Ranges*	Substitute
Left to Right	00	5 to 50 psig (0.3 to 3.5 bar)	E
Right to Left	02	5 to 125 psig (0.3 to 8.5 bar)	L
		5 to 150 psig (0.3 to 10 bar)	M
Piston Type	Substitute	Gauge	Substitute
Relieving	R	With	G
		Without	N

\* Outlet pressure can be adjusted to pressures in excess of, and less than, those specified. Do not use these units to control pressures outside of the specified ranges.

**ISO Symbols**


Relieving

**See Section ALE-25 for Accessories**



## Technical Data

Fluid: Compressed air

Maximum pressure: 250 psig (17 bar)

Operating temperature\*: -30° to 150°F (-34° to 65°C)

\*Air supply must be dry enough to avoid ice formation at temperatures below 35°F (2°C).

Typical flow with 150 psig (10 bar) inlet pressure, 90 psig (6.3 bar) set pressure and 15 psig (1 bar) droop from from set: 13 scfm (6 dm<sup>3</sup>/s)

Gauge ports:

1/8 PTF with PTF main ports

Rc1/8 with ISO G and ISO Rc main ports

Materials

Body: Zinc

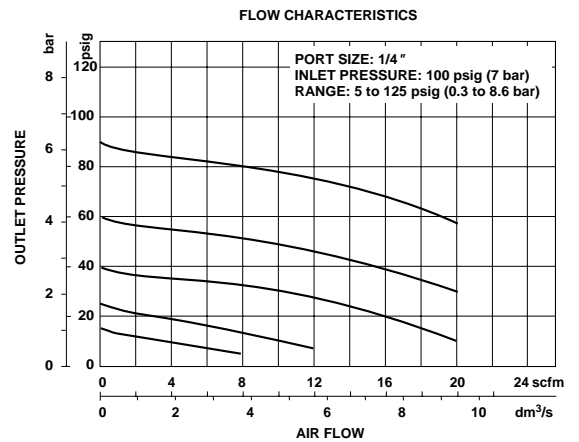
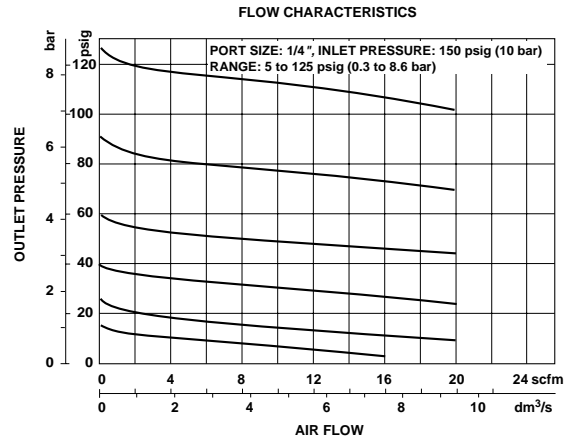
Knob: Nylon

Valve: Nitrile compound

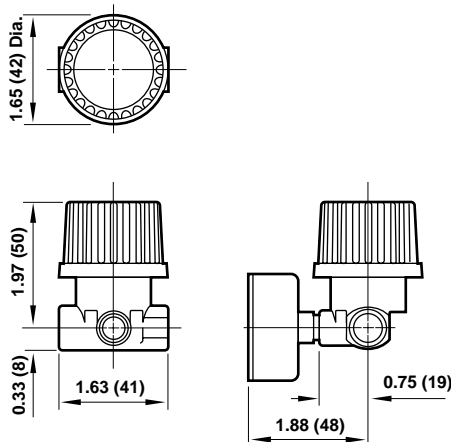
Valve seat: Acetal

Elastomers: Nitrile

## Typical Performance Characteristics



All Dimensions in Inches (mm)



- Excelon design allows in-line or modular installation
- Full flow gauge ports
- Balanced valve design for optimum pressure control
- Push to lock adjusting knob with tamper resistant accessory
- R72R reverse flow option
- Modular installations with Excelon 72, 73, and 74 series can be made to suit particular applications



**Ordering Information.** Models listed include unidirectional flow, PTF threads, knob adjustment, relieving diaphragm, 5 to 150 psig (0.3 to 10 bar) outlet pressure adjustment range\* with gauge.

Port Size	Model	Flow <sup>†</sup> scfm (dm <sup>3</sup> /s)	Weight lb (kg)
1/4"	R72G-2AK-RMG	70 (33)	0.79 (0.36)
3/8"	R72G-3AK-RMG	70 (33)	0.79 (0.36)

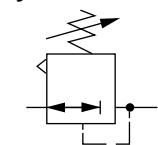
† Typical flow with 150 psig (10 bar) inlet pressure, 90 psig (6.3 bar) set pressure and a 15 psig (1 bar) droop from set.

### Alternative Models

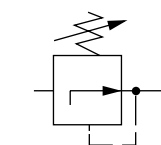
		R 7 2 ★ - ★ ★ ★ - ★ ★ ★				
Flow Type	Substitute				Gauge	Substitute
Standard	G				With	G
Reverse flow	R				Without	N
Port Size	Substitute				Outlet Pressure Adjustment Range*	Substitute
1/4"	2				5 to 30 psig (0.3 to 2 bar)	C
3/8"	3				5 to 60 psig (0.3 to 4 bar)	F
					5 to 150 psig (0.3 to 10 bar)	M
Threads	Substitute				Diaphragm	Substitute
PTF	A				Relieving	R
ISO Rc taper	B		Non relieving	N		
ISO G parallel	G				Adjustment	Substitute
					Knob	K
					T-bar	T

\* Outlet pressure can be adjusted to pressures in excess of, and less than, those specified. Do not use these units to control pressures outside of the specified ranges.

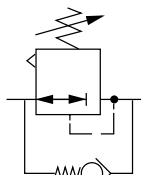
### ISO Symbols



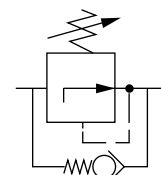
R72G Relieving



R72G Non Relieving



R72R Relieving



R72R Non Relieving

**See Section ALE-25 for Accessories**



## Technical Data

Fluid: Compressed air

Maximum pressure: 300 psig (20 bar)

Operating temperature\*: -30° to 150°F (-34° to 65°C)

\* Air supply must be dry enough to avoid ice formation at temperatures below 35°F (2°C).

Approximate flow at 150 psig (10 bar) inlet pressure, 90 psig (6.3 bar) set pressure and a droop of 15 psig (1 bar) from set: 70 scfm (33 dm<sup>3</sup>/s)

Gauge ports:

1/8" PTF with PTF main ports

1/8" ISO Rc with ISO Rc main ports

1/8" ISO Rc with ISO G main ports

Materials:

Body: Zinc

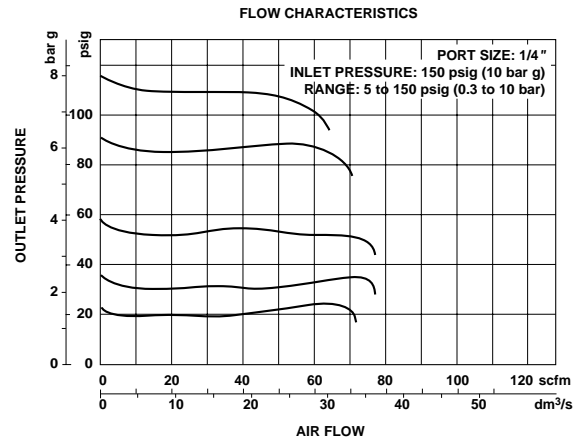
Bonnet: Acetal

Valve: Brass

Elastomers: Nitrile

Bottom plug: Acetal

## Typical Performance Characteristics



## Service Kits

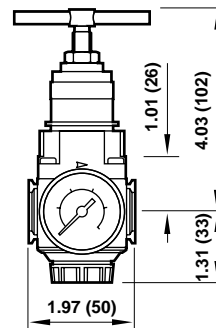
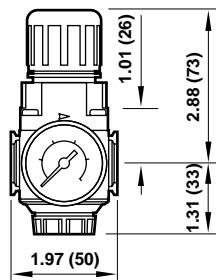
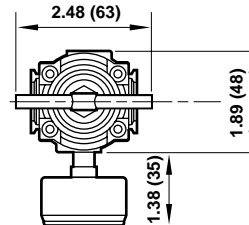
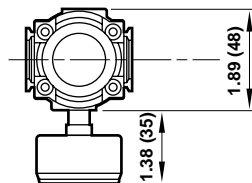
Item	Type	Part Number
Service kit	Relieving	4381-500
	Non relieving	4381-501

Service kit includes diaphragm assembly, valve assembly, valve spring and o-rings.

All Dimensions in Inches (mm)

Panel mounting hole diameter: 1.57" (40 mm)

Maximum panel thickness: 0.16" (4 mm)



- Excelon design allows in-line or modular installation
- Full flow gauge ports
- Balanced valve design minimizes effect of variation in the inlet pressure on the outlet pressure
- Standard relieving models allow reduction of downstream pressure when the system is dead-ended
- Optional reverse flow models available for use downstream of directional control valves
- Modular installations with Excelon 72, 73, and 74 series can be made to suit particular applications



**Ordering Information.** Models listed include uni-directional flow, PTF threads, knob adjustment, relieving diaphragm, 5 to 150 psig (0.3 to 10 bar) outlet pressure adjustment range\*, with gauge.

Port Size	Model	Flow <sup>†</sup> scfm (dm <sup>3</sup> /s)	Weight lb (kg)
1/4"	R73G-2AK-RMG	91 (43)	1.36 (0.6)
3/8"	R73G-3AK-RMG	144 (68)	1.36 (0.6)
1/2"	R73G-4AK-RMG	144 (68)	1.36 (0.6)

† Typical flow with 150 psig (10 bar) inlet pressure, 90 psig (6.3 bar) set pressure and 15 psig (1 bar) droop from set.

### Alternative Models

Flow Type	Substitute
Uni-directional	G
Reverse	R

Port Size	Substitute
1/4"	2
3/8"	3
1/2"	4

Threads	Substitute
PTF	A
ISO Rc taper	B
ISO G parallel	G

Adjustment	Substitute
Knob	K
T-bar	T

R 7 3 ★ - ★ ★ ★ - ★ ★ ★

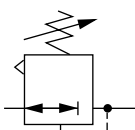
Gauge	Substitute
With	G
Without	N

Outlet Pressure Adjustment Range*	Substitute
5 to 60 psig (0.3 to 4 bar)	F
5 to 150 psig (0.3 to 10 bar)	M
10 to 250 psig (0.7 to 17 bar)	S

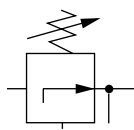
Diaphragm	Substitute
Relieving	R
Non relieving	N

\* Outlet pressure can be adjusted to pressures in excess of, and less than, those specified. Do not use these units to control pressures outside of the specified ranges.

### ISO Symbols



Relieving



Non relieving

**See Section ALE-25 for Accessories**



## Technical Data

Fluid: Compressed air

Maximum pressure: 300 psig (20 bar)

Operating temperature\*: -30° to 175°F (-34° to 80°C)

\*Air supply must be dry enough to avoid ice formation at temperatures below 35°F (2°C).

Typical flow with 150 psig (10 bar) inlet pressure, 90 psig (6.3 bar) set pressure and 15 psig (1 bar) droop from from set: 144 scfm (68 dm<sup>3</sup>/s)

Gauge ports:

1/4 PTF with PTF main ports

Rc1/4 with ISO Rc main ports

Rc1/8 with ISO G main ports

Materials

Body: Aluminum

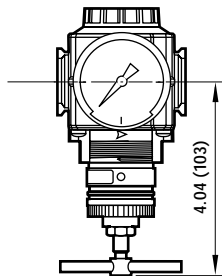
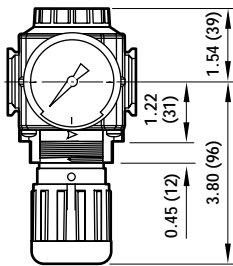
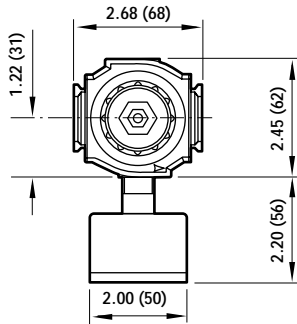
Bonnet: Aluminum or Zinc

Valve: Brass

Elastomers: Nitrile

Bottom plug: Acetal

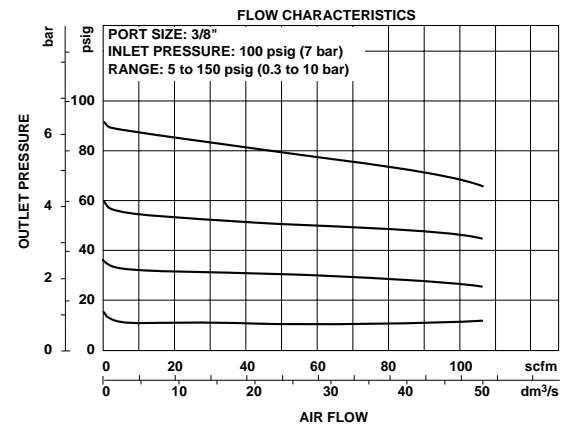
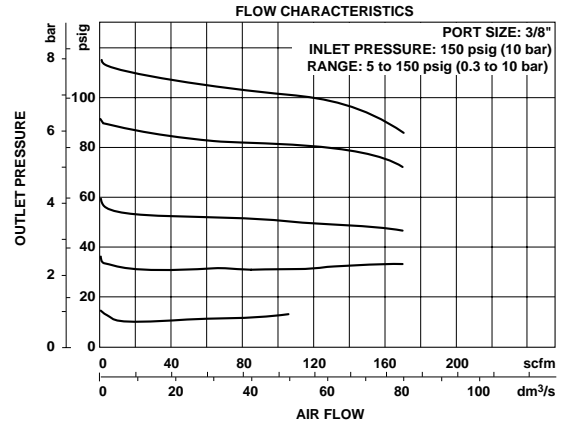
All Dimensions in Inches (mm)



Panel mounting hole diameter: 1.89" (48 mm)

Panel thickness: 0.06" to 0.25" (2 to 6 mm)

## Typical Performance Characteristics



## Service Kits

Item	Type	Part Number
Service kit	Relieving	4381-600
	Non-relieving	4381-601

Service kit includes diaphragm assembly, valve assembly, valve spring, bottom plug o-ring.

**Excelon 74 Pressure Regulator**  
**3/8", 1/2", 3/4" Port Sizes**

- Excelon design allows in-line or modular installation
- Full flow gauge ports
- Balanced valve design minimizes effect of variation in the inlet pressure on the outlet pressure
- Standard relieving models allow reduction of downstream pressure when the system is dead-ended
- Optional reverse flow models available for use downstream of directional control valves
- Modular installations with Excelon 72, 73, and 74 series can be made to suit particular applications



**Ordering Information.** Models listed include uni-directional flow, PTF threads, knob adjustment, relieving diaphragm, 5 to 150 psig (0.3 to 10 bar) outlet pressure adjustment range\*, with gauge.

Port Size	Model	Flow <sup>†</sup> scfm (dm <sup>3</sup> /s)	Weight lb (kg)
3/8"	R74G-3AK-RMG	208 (98)	1.80 (0.82)
1/2"	R74G-4AK-RMG	220 (105)	1.77 (0.80)
3/4"	R74G-6AK-RMG	220 (105)	1.73 (0.78)

† Typical flow with 150 psig (10 bar) inlet pressure, 90 psig (6.3 bar) set pressure and a droop of 15 psig (1 bar) from set.

**Alternative Models**

R 7 4 ★ - ★ ★ ★ - ★ ★ ★

Flow Type	Substitute
Uni-directional	G
Reverse	R

Port Size	Substitute
3/8"	3
1/2"	4
3/4"	6

Threads	Substitute
PTF	A
ISO Rc taper	B
ISO G parallel	G

Adjustment	Substitute
Knob	K
T-bar	T

Gauge	Substitute
With	G
Without	N

Outlet Pressure Adjustment Range*	Substitute
5 to 60 psig (0.3 to 4 bar)	F
5 to 150 psig (0.3 to 10 bar)	M
10 to 250 psig (0.7 to 17 bar)**	S

Diaphragm	Substitute
Relieving	R
Non relieving	N

\* Outlet pressure can be adjusted to pressures in excess of, and less than, those specified. Do not use these units to control pressures outside of the specified ranges.

\*\* Units with 250 psig (17 bar) outlet pressure range are available only with the T-bar adjustment; therefore substitute **T** at the 7th position and **S** at the 9th position.

**See Section ALE-25 for Accessories**



## Technical Data

Fluid: Compressed air

Maximum pressure: 300 psig (20 bar)

Operating temperature\*: -30° to 175°F (-34° to 80°C)

\*Air supply must be dry enough to avoid ice formation at temperatures below 35°F (2°C).

Typical flow with 150 psig (10 bar) inlet pressure, 90 psig (6.3 bar) set pressure and a droop of 15 psig (1 bar) from set: 220 scfm (105 dm<sup>3</sup>/s)

Gauge ports:

1/4 PTF with PTF main ports

Rc1/4 with ISO Rc main ports

Rc1/8 with ISO G main ports

Materials:

Body: Aluminum

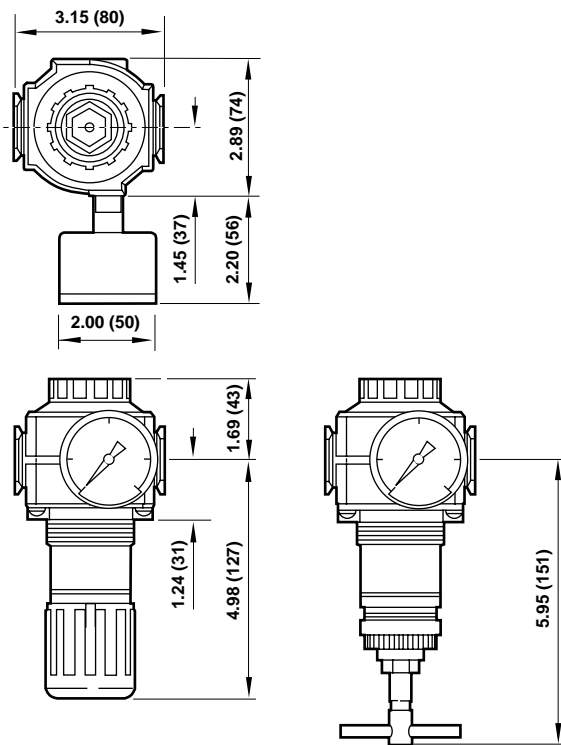
Bonnet : Aluminum

Valve: Brass

Elastomers: Nitrile

Bottom plug: Acetal

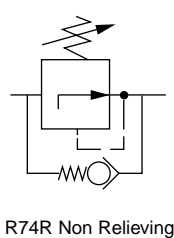
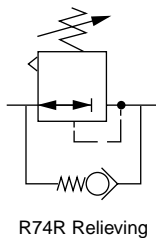
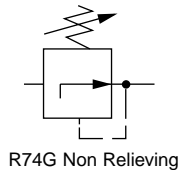
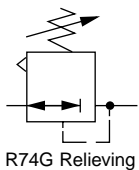
All Dimensions in Inches (mm)



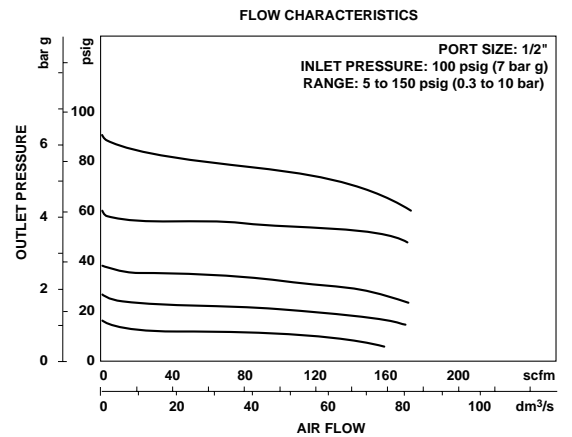
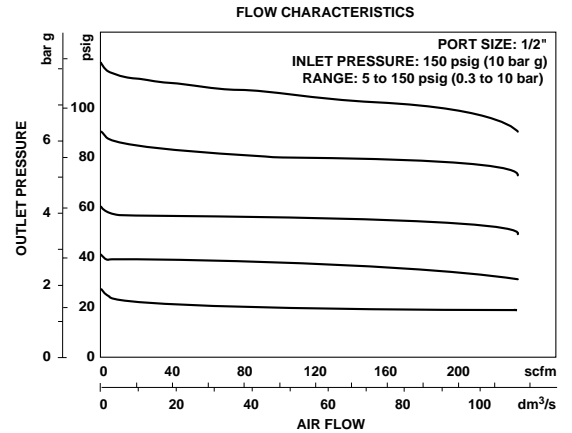
Panel mounting hole diameter: 2.06" (52 mm)

Panel thickness: 0.06" to 0.25" (2 to 6 mm)

## ISO Symbols



## Typical Performance Characteristics



## Service Kits

Item	Type	Part Number
Service kit	Relieving	4381-700
	Non relieving	4381-701

Service kit includes diaphragm assembly, valve assembly, valve spring, bottom plug o-ring.

**Olympian Plus Regulator**  
**1/4", 3/8", 1/2", 3/4" Port Sizes**

- Olympian Plus plug in design
- High flow general purpose regulator
- Push to lock adjusting knob with tamper resistant option
- Mount in any orientation



**Ordering Information.** Models listed include unidirectional flow, PTF threads, knob adjustment, relieving diaphragm, 5 to 150 psig (0.3 to 10 bar) outlet pressure adjustment range\* with gauge.

Port Size	Model	Flow <sup>†</sup> scfm (dm <sup>3</sup> /s)	Weight lb (kg)
1/4"	R64G-2AK-RMG	74 (35)	3.42 (1.54)
3/8"	R64G-3AK-RMG	170 (80)	3.38 (1.52)
1/2"	R64G-4AK-RMG	254 (120)	3.31 (1.49)
3/4"	R64G-6AK-RMG	N.A.	4.11 (1.85)

† Typical flow with 150 psig (10 bar) inlet pressure, 90 psig (6.3 bar) set pressure and a 15 psig (1 bar) droop from set.

For replacement regulator (without yoke) substitute 'N' at the 5th and 6th digits eg: R64G-NNK-RMN.

**Alternative Models**

R 6 4 ★ - ★ ★ ★ - ★ ★ ★

Flow Type	Substitute
Standard	G
Reverse flow	R

Port Size	Substitute
1/4"	2
3/8"	3
1/2"	4
3/4"	6

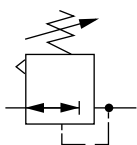
Threads	Substitute
PTF	A
ISO Rc taper	B
ISO G parallel	G

Gauge	Substitute
With	G
Without	N

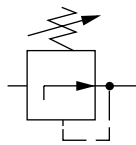
Outlet Pressure Adjustment Range*	Substitute
5 to 60 psig (0.3 to 4 bar)	F
5 to 150 psig (0.3 to 10 bar)	M
10 to 250 psig (0.7 to 17 bar)	S**

Diaphragm	Substitute
Relieving	R
Non relieving	N

Adjustment	Substitute
Knob	K
T-bar	T

**ISO Symbols**


Relieving



Non Relieving

\* Outlet pressure can be adjusted to pressures in excess of, and less than, those specified. Do not use these units to control pressures outside of the specified ranges.

\*\* Units with 250 psig (17 bar) outlet pressure range are available only with the T-bar adjustment; therefore substitute **T** at the 7th digit and **S** at the 9th position.

**See Section ALE-25 for Accessories**



## Technical Data

Fluid: Compressed air

Maximum pressure: 250 psig (17 bar)

Operating temperature\*: -30° to 175°F (-34° to 80°C)

\* Air supply must be dry enough to avoid ice formation at temperatures below 35°F (2°C).

Typical flow at 150 psig (10 bar) inlet pressure, 90 psig (6.3 bar) set pressure and a droop of 15 psig (1 bar) from set: 254 scfm (120 dm<sup>3</sup>/s)

Gauge Ports:

1/8" PTF with PTF main ports

1/8" ISO Rc with ISO Rc main ports

1/8" ISO Rc with ISO G main ports

Materials:

Body: Zinc

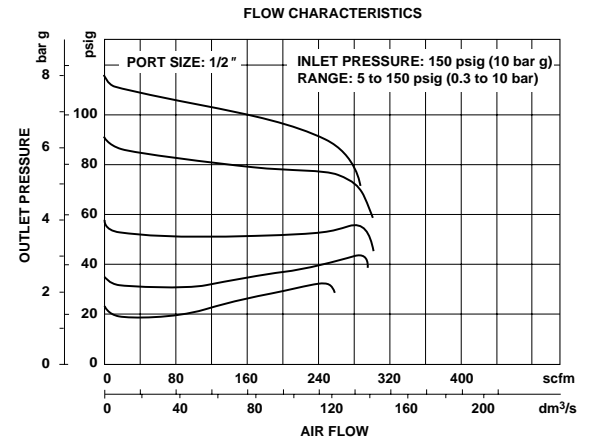
Bonnet: Aluminium

Yoke: Zinc

Valve: Brass

Elastomers: Synthetic rubber

## Typical Performance Characteristics



## Service Kits

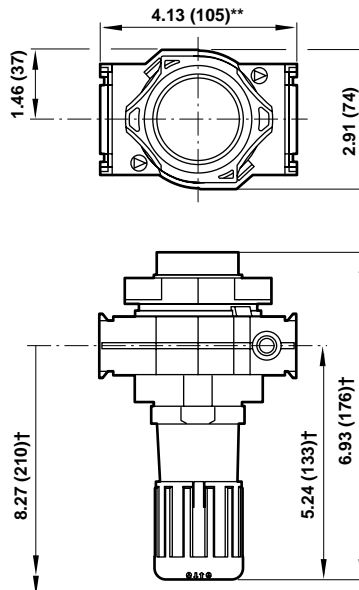
Item	Type	Part Number
Service kit	Relieving	4381-200
	Non relieving	4381-201

Service kit includes port and bottom plug 'O' rings, valve assembly, valve spring and diaphragm.

All Dimensions in Inches (mm)

Panel mounting hole diameter: 2.06" (52 mm)

Maximum panel thickness: 0.25" (6 mm)



† Reduces by 4 mm with knob in locked position. Add 37 mm for unit with 'T' handle.

\*\* 6.18" (157 mm) for models with 3/4" ports

**Olympian Regulator**  
**3/4", 1", 1-1/4", 1-1/2" Port Sizes**

- Olympian plug in design
- Robust and compact
- High flow unit with large valve and diaphragm
- Push to lock adjusting knob with tamper resistant option
- Excellent flow and regulation characteristics



**Ordering Information.** Models listed include PTF threads, knob adjustment, relieving diaphragm, 5 to 120 psig (0.4 to 8 bar) outlet pressure adjustment range\* with gauge.

Port Size	Model	Flow† scfm (dm <sup>3</sup> /s)	Weight lb (kg)
3/4	R68G-6AK-RLG	318 (150)	4.29 (1.95)
1	R68G-8AK-RLG	360 (170)	4.16 (1.89)
1-1/4	R68G-AAK-RLG	360 (170)	4.24 (1.93)
1-1/2	R68G-BAK-RLG	360 (170)	4.33 (1.97)

**Alternative Models**

Port Size	Substitute
3/4"	6
1"	8
1-1/4"	A
1-1/2"	B
None	N

Threads	Substitute
PTF	A
ISO Rc taper	B
ISO G parallel	G
No Yoke ( <i>N</i> in 5th position)	N
Rc threaded gauge ports	
No Yoke ( <i>N</i> in 5th position)	A
PTF threaded gauge ports	

Option	Substitute
Adjusting knob	K
T-bar	T

Gauge	Substitute
With	G
Without	N

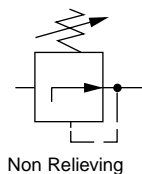
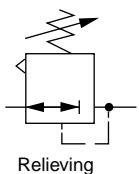
Outlet Pressure Adjustment Range*	Substitute
0 to 60 psig (0 to 4 bar)	F
5 to 120 psig (0.4 to 8 bar)	L
10 to 250 psig (0.7 to 17 bar)	S**

Type	Substitute
Relieving	R
Non relieving	N
Relieving, Viton option	F
Non relieving, Viton option	E

R 6 8 G - ★ ★ ★ - ★ ★ ★

**ISO Symbol**


\* Outlet pressure can be adjusted to pressures in excess of, and less than, those specified. Do not use these units to control pressures outside of the specified ranges.

\*\* Units with 250 psig (17 bar) adjustment range are available only with the T-bar adjustment; therefore substitute **T** at the 7th digit and **S** at the 9th position.

† Typical flow with 150 psig (10 bar) inlet pressure, 90 psig (6.3 bar) set pressure and a 15 psig (1 bar) droop from set.



## Technical Data

Fluid: Compressed air

Maximum pressure: 300 psig (20 bar)

Operating temperature\*: 0° to +175°F (-20° to +80°C)

\* Air supply must be dry enough to avoid ice formation at temperatures below +35°F (+2°C).

Typical flow at 150 psig (10 bar) inlet pressure, 90 psig

(6.3 bar) set pressure and a droop of 15 psig (1 bar) from set:

370 scfm (170 dm<sup>3</sup>/s)

Gauge ports:

1/8 PTF with PTF yoke ports

Rc1/8 with ISO Rc yoke ports

Rc1/8 with ISO G yoke ports

Materials:

Body: Aluminum

Yoke: Aluminum

Bonnet: Aluminum

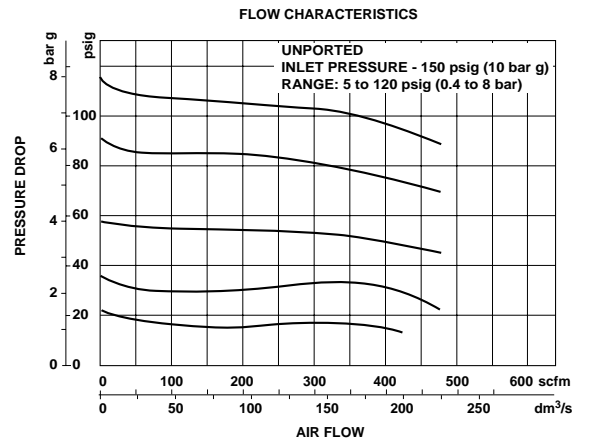
Adjusting knob: Acetal resin

Valve: Aluminium

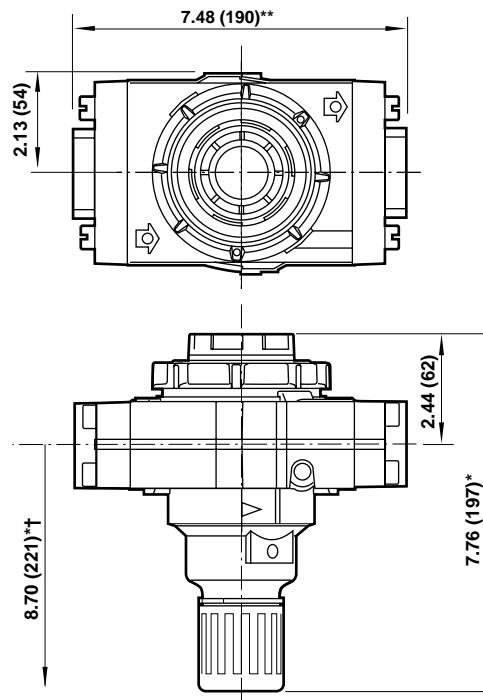
Optional T-bar adjusting screw: Steel

Elastomers: Synthetic rubber

## Typical Performance Characteristics



All Dimensions in Inches (mm)



\* Add 1.46" (37mm) for unit with T-bar.

\*\* Add 0.39" (10mm) 1-1/4" and 1-1/2" models.

† Minimum clearance required to remove unit.

**17 Series General Purpose Regulator**  
**3/4", 1", 1-1/4", and 1-1/2" Port Sizes**

- Accurate and quick response to changes in flow demand and line pressure variations
- Balanced valve minimizes effect of changes in inlet pressure on outlet pressure
- Standard relieving models allow reduction of outlet pressure even when the system is dead-ended
- Full flow gauge ports
- Low torque, non-rising adjusting knob
- Integral locking device on knob adjustment
- Can be serviced without removal from the air line



**Ordering Information.** Models listed are knob adjustment, relieving type with gauge, 5 to 125 psig (0.3 to 8.5 bar) outlet pressure adjustment range\*, and PTF threads.

Port Size	Model Number	Flow <sup>†</sup> scfm (dm <sup>3</sup> /s)	Weight lbs (kg)
3/4"	R17-600-RGLA	440 (208)	2.31 (1.05)
1"	R17-800-RGLA	480 (227)	2.02 (0.92)
1-1/4"	R17-A00-RGLA	400 (189)	2.68 (1.22)
1-1/2"	R17-B00-RGLA	440 (208)	2.59 (1.18)

<sup>†</sup> Typical flow with 150 psig (10 bar) inlet pressure, 90 psig (6.3 bar) set pressure and a 15 psig (1 bar) droop from set.

**Alternative Models**

R 1 7 - ★ ★ ★ - ★ ★ ★ ★

Port Size	Substitute
3/4"	6
1"	8
1-1/4"	A
1-1/2"	B

Option	Substitute
Not applicable	0
Adjustment	Substitute
Knob	0
T-bar	1

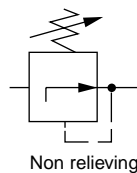
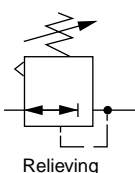
Diaphragm	Substitute
Relieving	R
Non relieving	N

Threads	Substitute
PTF	A
ISO Rc taper	B
BSPP (1-1/2" ported units only)	C
ISO G parallel (not available with 1-1/2" ported units)	G

Outlet Pressure Adjustment Ranges*	Substitute
5 to 50 psig (0.3 to 3.5 bar)	E
5 to 125 psig (0.3 to 8.5 bar)	L
10 to 250 psig (0.7 to 17 bar)	S

Gauge	Substitute
With	G
Without	N

\* Outlet pressure can be adjusted to pressures in excess of, and less than, those specified. Do not use these units to control pressures outside of the specified ranges.

**ISO Symbols**


**See Section ALE-25 for Accessories**



## Technical Data

Fluid: Compressed air

Maximum pressure: 300 psig (20 bar)

Operating temperature: -30° to 175°F (-34° to 80°C)\*

\* Air supply must be dry enough to avoid ice formation at temperatures 35°F (2°C).

Typical flow at 150 psig (10 bar) inlet pressure, 90 psig (6.3 bar) set pressure, and a droop of 15 psig (1 bar) from set: 480 scfm (227 dm<sup>3</sup>/s)

Gauge ports:

1/4" PTF with PTF main ports

R1/4 with ISO Rc, ISO G, and BSPP main ports

Materials

Body: Aluminum

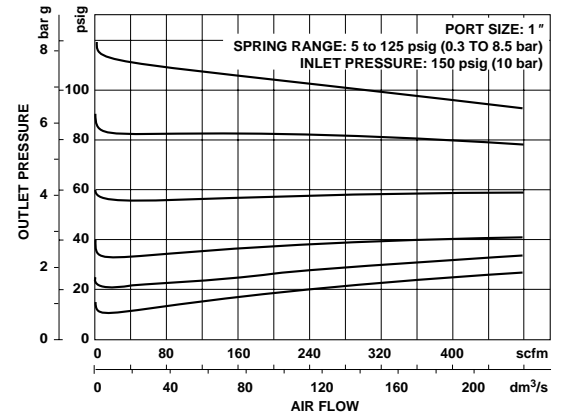
Bonnet: Aluminum

Bottom plug: Acetal

Valve: Aluminum and nylon

Elastomers: Nitrile

## Typical Performance Characteristics

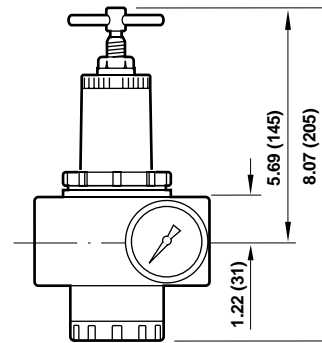
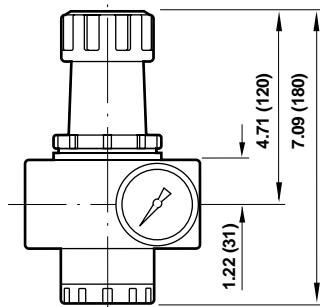
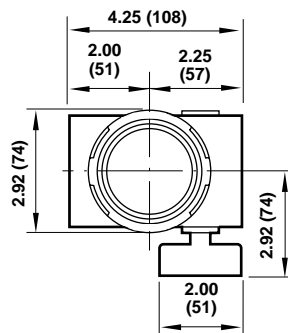


## Service Kits

Item	Type	Part number
Service kit	Relieving	5578-02
	Non relieving	5578-01

Service kit contains, diaphragm, all o-rings, valve, and valve spring.

All Dimensions in Inches (mm)



Panel mounting hole diameter: 2.28" (58 mm)  
 Panel thickness: 0.06" to 0.16" (2 to 4 mm)

**18 Series General Purpose Pressure Regulator  
1-1/2" and 2" Port Sizes**

- The R18 with the conventional integral pilot provides good pressure regulation, rapid response to changing flow demands, and excellent stability.
- The R18 with the feedback integral pilot provides superior pressure regulation under changing flow demands where changes in flow demand are not sudden or cyclic.
- Balanced valve minimizes effect of changes in inlet pressure on outlet pressure
- Constant bleed feature in pilot regulator provides quick response and minimum dead-band
- Exceptionally high relief flow
- Full flow gauge ports
- Low torque, non-rising adjusting knob
- Integral locking device on knob adjustment



**Ordering Information.** Models listed include R40 conventional integral pilot, relieving diaphragm, with gauge, 5 to 125 psig (0.3 to 8.5 bar) outlet pressure adjustment range\*, and PTF threads.

Port Size	Model	Flow <sup>†</sup> scfm (dm <sup>3</sup> /s)	Weight lb (kg)
1-1/2"	R18-B05-RGLA	2000 (944)	8.48 (3.85)
2"	R18-C05-RGLA	2000 (944)	8.27 (3.75)

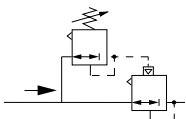
† Typical flow with 100 psig (0.7 bar) inlet pressure, 90 psig (6.3 bar) set pressure and a droop of 15 psig (1 bar) from set.

**Alternative Models**

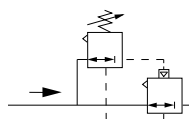
Port Size	Substitute	Pilot Regulator Type	Substitute	Port Threads	Substitute	Outlet Pressure Adjustment Ranges*	Substitute	Gauge	Substitute	Diaphragm	Substitute
1-1/2"	B	R40 Conventional	05	PTF	A	5 to 50 psig (0.3 to 3.5 bar)	E	With	G	Relieving	R
2"	C	R41 Feedback**	06	ISO Rc taper	B	5 to 125 psig (0.3 to 8.5 bar)	L	Without	N	Non relieving	N
				ISO G parallel	G	10 to 250 psig (0.7 to 17 bar)	S				

\* Outlet pressures can be adjusted to pressures in excess or, and less than, those specified. Do not use these units to control pressures outside of the specified ranges.

\*\* Requires relieving diaphragm and 250 psig (17 bar) spring (R in 7th position and S in 9th position) e.g. R18-B06-RNSG.

**ISO Symbols**


R18 with Conventional Pilot Regulator



R18 with Feedback Pilot Regulator

**See Section ALE-25 for Accessories**



## Technical Data

Fluid: Compressed air

Inlet pressure range: 10 psig (0.7 bar) minimum to 450 psig (31 bar) maximum

Operating temperature: -30° to 175°F (-34° to 80°C) \*

\* Air supply must be dry enough to avoid ice formation at temperatures below 35°F (2°C)

Typical flow with 100 psig (0.7 bar) inlet pressure, 90 psig (6.3 bar) set pressure, and a droop of 115 psig ( bar) from set: 2000 scfm (944 dm<sup>3</sup>/s)

Gauge ports:

1/4" PTF with PTF main ports

G1/4 with ISO G main ports

R1/4 with ISO Rc main ports

Exhaust port:

3/4" PTF with PTF main ports

G3/4 with ISO G main ports

R3/4 with ISO Rc main ports

Maximum bleed rate: 0.25 scfm (0.12 dm<sup>3</sup>/s) at 50 psig (3.5 bar) outlet pressure.

Materials

Body: Aluminum

Bonnet: Aluminum

Bottom Plug: Aluminum

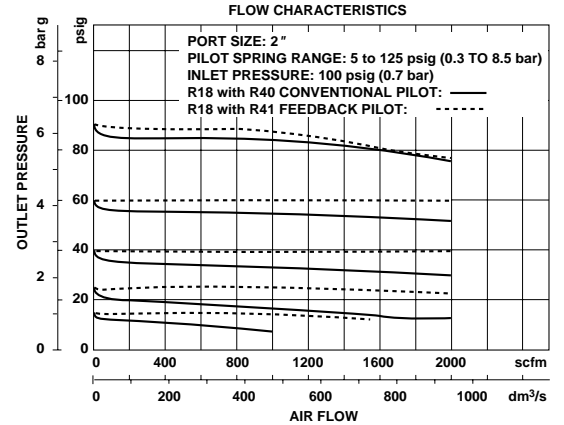
Valve

Integral Pilot Regulator: Teflon

Pilot Operated Regulator: Aluminum

Elastomers: Nitrile

## Typical Performance Characteristics



## Service Kits

Item	Type	Part number
Service kits	R18 Pilot operated regulator**	5945-40
	R40 and R41 Pilot regulators†	5945-41

\*\* Contains filter screen and all o-rings for R18 pilot operated regulator.

† Contains diaphragm, valve spring, valve, guide bushing, filter screen, and all o-rings for R40 and R41 pilot regulators.

All Dimensions in Inches (mm)

